

КАПИЛЛЯРНЫЕ КОЛОННЫ DN-1701

Архангельск (8182)63-90-72
Астана (7172)727-132
Астрахань (8512)99-46-04
Барнаул (3852)73-04-60
Белгород (4722)40-23-64
Брянск (4832)59-03-52
Владивосток (423)249-28-31
Волгоград (844)278-03-48
Вологда (8172)26-41-59
Воронеж (473)204-51-73
Екатеринбург (343)384-55-89
Иваново (4932)77-34-06
Ижевск (3412)26-03-58
Казань (843)206-01-48

Калининград (4012)72-03-81
Калуга (4842)92-23-67
Кемерово (3842)65-04-62
Киров (8332)68-02-04
Краснодар (861)203-40-90
Красноярск (391)204-63-61
Курск (4712)77-13-04
Липецк (4742)52-20-81
Магнитогорск (3519)55-03-13
Москва (495)268-04-70
Мурманск (8152)59-64-93
Набережные Челны (8552)20-53-41
Нижний Новгород (831)429-08-12
Новокузнецк (3843)20-46-81

Новосибирск (383)227-86-73
Омск (3812)21-46-40
Орел (4862)44-53-42
Оренбург (3532)37-68-04
Пенза (8412)22-31-16
Пермь (342)205-81-47
Ростов-на-Дону (863)308-18-15
Рязань (4912)46-61-64
Самара (846)206-03-16
Санкт-Петербург (812)309-46-40
Саратов (845)249-38-78
Севастополь (8692)22-31-93
Симферополь (3652)67-13-56
Смоленск (4812)29-41-54

Сочи (862)225-72-31
Ставрополь (8652)20-65-13
Сургут (3462)77-98-35
Тверь (4822)63-31-35
Томск (3822)98-41-53
Тула (4872)74-02-29
Тюмень (3452)66-21-18
Ульяновск (8422)24-23-59
Уфа (347)229-48-12
Хабаровск (4212)92-98-04
Челябинск (351)202-03-61
Череповец (8202)49-02-64
Ярославль (4852)69-52-93

DN-1701 15m

| ID | Film | Max Temp | Code | Chroma |
|--------|--------|----------|--------------|--------|
| 0.25mm | 0.15µm | 280°C | 9414.116 481 | |
| 0.25mm | 0.25µm | 280°C | 9414.116 482 | |
| 0.25mm | 0.45µm | 280°C | 9414.116 483 | |
| 0.25mm | 1.00µm | 280°C | 9414.116 484 | |
| 0.25mm | 1.50µm | 280°C | 9414.116 485 | |
| 0.32mm | 0.15µm | 280°C | 9414.116 486 | |
| 0.32mm | 0.25µm | 280°C | 9414.116 487 | |
| 0.32mm | 0.45µm | 280°C | 9414.116 488 | |
| 0.32mm | 1.00µm | 280°C | 9414.116 489 | |
| 0.32mm | 1.50µm | 280°C | 9414.116 490 | |
| 0.53mm | 0.15µm | 280°C | 9414.116 491 | |
| 0.53mm | 0.25µm | 280°C | 9414.116 492 | |
| 0.53mm | 0.45µm | 280°C | 9414.116 493 | |
| 0.53mm | 1.00µm | 280°C | 9414.116 494 | |
| 0.53mm | 1.50µm | 280°C | 9414.116 495 | |

DN-1701 50m

| ID | Film | Max Temp | Code | Chroma |
|--------|--------|----------|--------------|--------|
| 0.25mm | 0.15µm | 280°C | 9414.116 526 | |
| 0.25mm | 0.25µm | 280°C | 9414.116 527 | |
| 0.25mm | 0.45µm | 280°C | 9414.116 528 | |
| 0.25mm | 1.00µm | 280°C | 9414.116 529 | |
| 0.25mm | 1.50µm | 280°C | 9414.116 530 | |
| 0.32mm | 0.15µm | 280°C | 9414.116 531 | |
| 0.32mm | 0.25µm | 280°C | 9414.116 532 | |
| 0.32mm | 0.45µm | 280°C | 9414.116 533 | |
| 0.32mm | 1.00µm | 280°C | 9414.116 534 | |
| 0.32mm | 1.50µm | 280°C | 9414.116 535 | |
| 0.53mm | 0.15µm | 280°C | 9414.116 536 | |
| 0.53mm | 0.25µm | 280°C | 9414.116 537 | |
| 0.53mm | 0.45µm | 280°C | 9414.116 538 | |
| 0.53mm | 1.00µm | 280°C | 9414.116 539 | |
| 0.53mm | 1.50µm | 280°C | 9414.116 540 | |

DN-1701 25m

| ID | Film | Max Temp | Code | Chroma |
|--------|--------|----------|--------------|--------|
| 0.25mm | 0.15µm | 280°C | 9414.116 496 | |
| 0.25mm | 0.25µm | 280°C | 9414.116 497 | 025 |
| 0.25mm | 0.45µm | 280°C | 9414.116 498 | |
| 0.25mm | 1.00µm | 280°C | 9414.116 499 | |
| 0.25mm | 1.50µm | 280°C | 9414.116 500 | |
| 0.32mm | 0.15µm | 280°C | 9414.116 501 | |
| 0.32mm | 0.25µm | 280°C | 9414.116 502 | |
| 0.32mm | 0.45µm | 280°C | 9414.116 503 | |
| 0.32mm | 1.00µm | 280°C | 9414.116 504 | |
| 0.32mm | 1.50µm | 280°C | 9414.116 505 | |
| 0.53mm | 0.15µm | 280°C | 9414.116 506 | |
| 0.53mm | 0.25µm | 280°C | 9414.116 507 | |
| 0.53mm | 0.45µm | 280°C | 9414.116 508 | |
| 0.53mm | 1.00µm | 280°C | 9414.116 509 | |
| 0.53mm | 1.50µm | 280°C | 9414.116 510 | |

DN-1701 60m

| ID | Film | Max Temp | Code | Chroma |
|--------|--------|----------|--------------|--------|
| 0.25mm | 0.15µm | 280°C | 9414.116 541 | |
| 0.25mm | 0.25µm | 280°C | 9414.116 542 | |
| 0.25mm | 0.45µm | 280°C | 9414.116 543 | |
| 0.25mm | 1.00µm | 280°C | 9414.116 544 | |
| 0.25mm | 1.50µm | 280°C | 9414.116 545 | |
| 0.32mm | 0.15µm | 280°C | 9414.116 546 | |
| 0.32mm | 0.25µm | 280°C | 9414.116 547 | |
| 0.32mm | 0.45µm | 280°C | 9414.116 548 | |
| 0.32mm | 1.00µm | 280°C | 9414.116 549 | |
| 0.32mm | 1.50µm | 280°C | 9414.116 550 | |
| 0.53mm | 0.15µm | 280°C | 9414.116 551 | |
| 0.53mm | 0.25µm | 280°C | 9414.116 552 | |
| 0.53mm | 0.45µm | 280°C | 9414.116 553 | |
| 0.53mm | 1.00µm | 280°C | 9414.116 554 | |
| 0.53mm | 1.50µm | 280°C | 9414.116 555 | |

DN-1701 30m

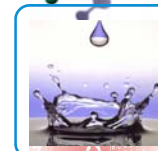
| ID | Film | Max Temp | Code | Chroma |
|--------|--------|----------|--------------|--------|
| 0.25mm | 0.15µm | 280°C | 9414.116 511 | |
| 0.25mm | 0.25µm | 280°C | 9414.116 512 | |
| 0.25mm | 0.45µm | 280°C | 9414.116 513 | |
| 0.25mm | 1.00µm | 280°C | 9414.116 514 | |
| 0.25mm | 1.50µm | 280°C | 9414.116 515 | |
| 0.32mm | 0.15µm | 280°C | 9414.116 516 | |
| 0.32mm | 0.25µm | 280°C | 9414.116 517 | |
| 0.32mm | 0.45µm | 280°C | 9414.116 518 | |
| 0.32mm | 1.00µm | 280°C | 9414.116 519 | |
| 0.32mm | 1.50µm | 280°C | 9414.116 520 | |
| 0.53mm | 0.15µm | 280°C | 9414.116 521 | |
| 0.53mm | 0.25µm | 280°C | 9414.116 522 | |
| 0.53mm | 0.45µm | 280°C | 9414.116 523 | |
| 0.53mm | 1.00µm | 280°C | 9414.116 524 | |
| 0.53mm | 1.50µm | 280°C | 9414.116 525 | |

DN-1701 Technical Specifications

Every Column Individually Tested
 Test Certified and Grob Mixture included in each Column
 Instruction Manual included in each Column

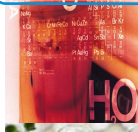
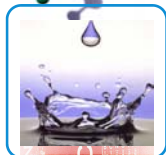
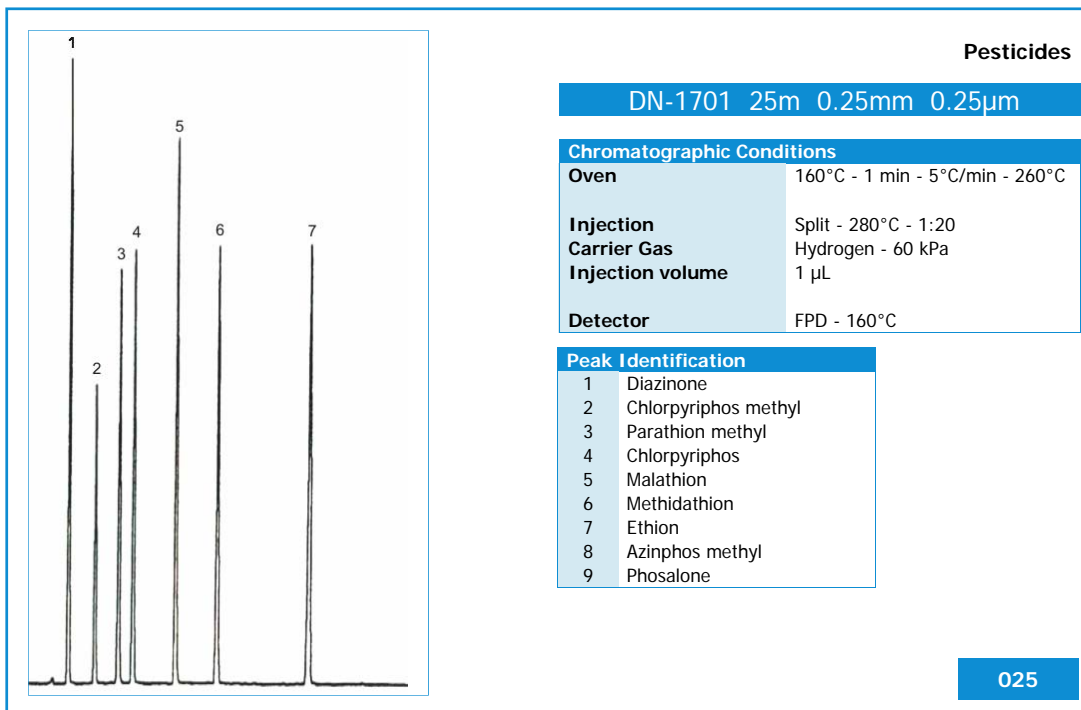
DANI DN-1701 Capillary Column
 (7% Cyanopropyl 7% Phenyl) - 86% methylpolysiloxane
 Intermediate Polarity
 Bonded and cross-linked
 Inertness
 Low bleeding
 Good thermal stability

Similar to 007-1701, CP-Sil 19CB, DB-1701, HP™-1701, OV™-1701, PAS-1701, Rtx™-1701, SPB-1701, BP-10, ZB-1701, AT™-1701



DN-1701

Chromatograms



DN-1701 FAST

DN-1701 FAST 5m

| ID | Film | Max Temp | Code | Chroma |
|--------|--------|----------|--------------|-------------|
| 0.05mm | 0.05µm | 350°C | 9414.116 556 | |
| 0.05mm | 0.10µm | 350°C | 9414.116 557 | |
| 0.10mm | 0.10µm | 350°C | 9414.116 558 | 026/027/028 |
| 0.10mm | 0.20µm | 350°C | 9414.116 559 | |

DN-1701 FAST 10m

| ID | Film | Max Temp | Code | Chroma |
|--------|--------|----------|--------------|--------|
| 0.05mm | 0.05µm | 350°C | 9414.116 560 | |
| 0.05mm | 0.10µm | 350°C | 9414.116 561 | |
| 0.10mm | 0.10µm | 350°C | 9414.116 562 | |
| 0.10mm | 0.20µm | 350°C | 9414.116 563 | |

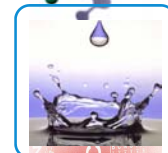
DN-1701 FAST

Technical Specifications

Every Column Individually Tested
 Test Certified and Grob Mixture included in each Column
 Instruction Manual included in each Column

DANI DN-1701 FAST Capillary Column
 (7% Cyanopropyl 7% Phenyl) - 86% methylpolysiloxane
 Intermediate Polarity
 Bonded and cross-linked
 Inertness
 Low bleeding
 Good thermal stability

Similar to 007-1701, CP-Sil 19CB, DB-1701, HP™-1701,
 OV™-1701, PAS-1701, Rtx™-1701, SPB-1701,
 BP-10, ZB-1701, AT™-1701



DN-1701 FAST

Chromatograms

Peak Identification

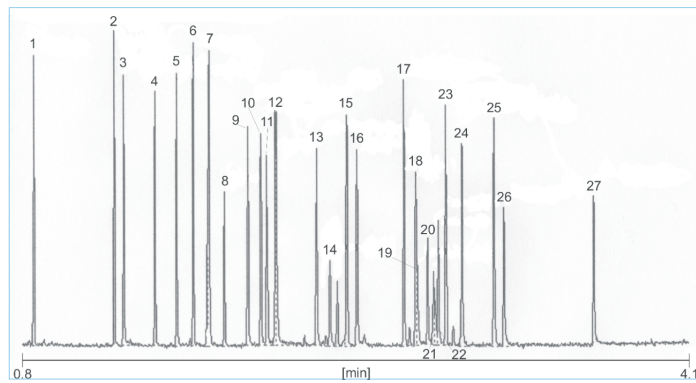
- 1 Limonene
- 2 Linalol
- 3 Benzyl Alcohol
- 4 Veratrol
- 5 Me-Octynoate
- 6 Citronellol
- 7 /
- 8 Neral
- 9 Geranial
- 10 OH-Citronellal
- 11 Eugenol
- 12 Anisol + Cinnamol
- 13 α iso Me-Ionone
- 14 Isoeugenol
- 15 Lilial
- 16 Coumarine
- 17 Amyl Cynnamol
- 18 Lyrall 1
- 19 Lyrall 2
- 20 Farnesol 1
- 21 Farnesol 2
- 22 Farnesol 3
- 23 Amyl Cynnamol
- 24 Hexyl Cynnamol
- 25 Cynnamol
- 26 Bz. Salicylate
- 27 Bz. Cynamate

Allergens

DN-1701 FAST 5m 0.10mm 0.10 μ m

Chromatographic Conditions

| | |
|-------------------------|---|
| Oven | 50°C - 0.1 min - 50°C/min - 250°C - 5 min |
| Injection | Split - 230°C - 1:200 |
| Carrier Gas | Hydrogen - 0.5 ml/min |
| Injection volume | 1 μ L |
| Detector | FID - 250°C |



Courtesy of Prof. C. Bicchi, C. Brunelli
 Università di Torino - Dipartimento Scienza e Tecnologia del Farmaco
 Via P. Giuria, 9 - Torino - ITALY

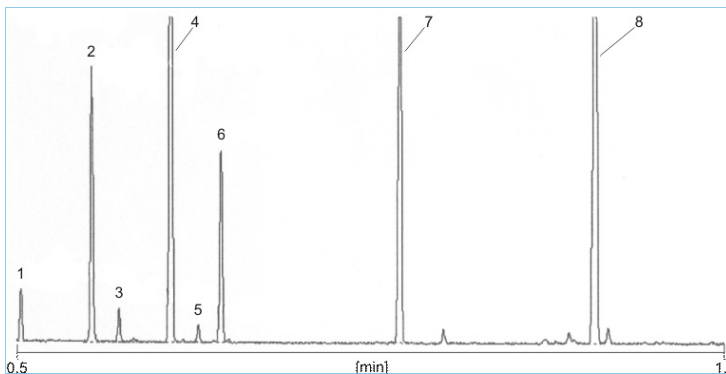
026

Bergamot

DN-1701 FAST 5m 0.10mm 0.10 μ m

Chromatographic Conditions

| | |
|-------------------------|---|
| Oven | 50°C - 0.1 min - 50°C/min - 250°C - 5 min |
| Injection | Split - 230°C - 1:200 |
| Carrier Gas | Hydrogen - 0.5 ml/min |
| Injection volume | 1 μ L |
| Detector | FID - 250°C |



Peak Identification

- 1 α -Pinene
- 2 β -Pinene
- 3 Myrcene
- 4 Limonene
- 5 p-Cimene
- 6 γ -Terpinene
- 7 Linalool
- 8 Linalyl Acetate

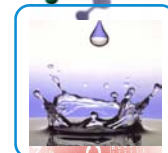
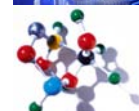
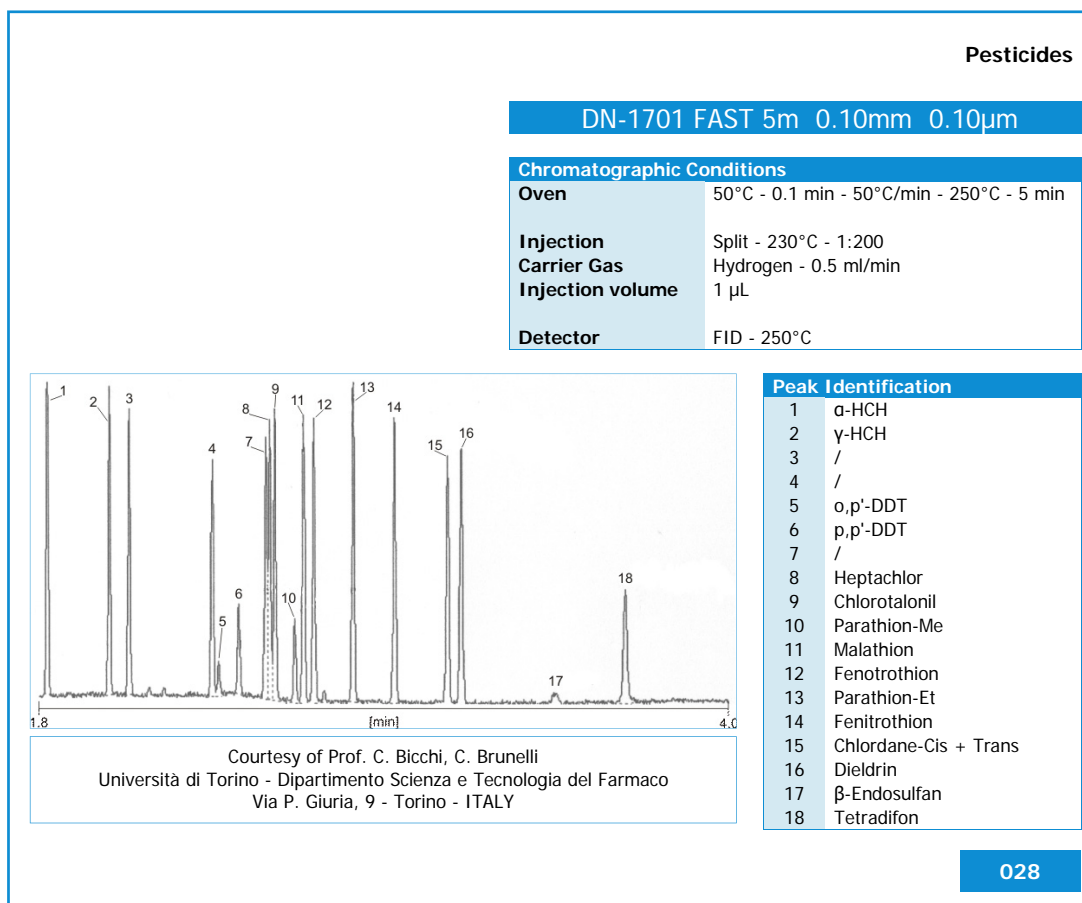
Courtesy of Prof. C. Bicchi, C. Brunelli
 Università di Torino - Dipartimento Scienza e Tecnologia del Farmaco
 Via P. Giuria, 9 - Torino - ITALY

027



DN-1701 FAST

Chromatograms



По вопросам продажи и поддержки обращайтесь:

Архангельск (8182)63-90-72
Астана (7172)727-132
Астрахань (8512)99-46-04
Барнаул (3852)73-04-60
Белгород (4722)40-23-64
Брянск (4832)59-03-52
Владивосток (423)249-28-31
Волгоград (844)278-03-48
Вологда (8172)26-41-59
Воронеж (473)204-51-73
Екатеринбург (343)384-55-89
Иваново (4932)77-34-06
Ижевск (3412)26-03-58
Казань (843)206-01-48

Калининград (4012)72-03-81
Калуга (4842)92-23-67
Кемерово (3842)65-04-62
Киров (8332)68-02-04
Краснодар (861)203-40-90
Красноярск (391)204-63-61
Курск (4712)77-13-04
Липецк (4742)52-20-81
Магнитогорск (3519)55-03-13
Москва (495)268-04-70
Мурманск (8152)59-64-93
Набережные Челны (8552)20-53-41
Нижний Новгород (831)429-08-12
Новокузнецк (3843)20-46-81

Новосибирск (383)227-86-73
Омск (3812)21-46-40
Орел (4862)44-53-42
Оренбург (3532)37-68-04
Пенза (8412)22-31-16
Пермь (342)205-81-47
Ростов-на-Дону (863)308-18-15
Рязань (4912)46-61-64
Самара (846)206-03-16
Санкт-Петербург (812)309-46-40
Саратов (845)249-38-78
Севастополь (8692)22-31-93
Симферополь (3652)67-13-56
Смоленск (4812)29-41-54

Сочи (862)225-72-31
Ставрополь (8652)20-65-13
Сургут (3462)77-98-35
Тверь (4822)63-31-35
Томск (3822)98-41-53
Тула (4872)74-02-29
Тюмень (3452)66-21-18
Ульяновск (8422)24-23-59
Уфа (347)229-48-12
Хабаровск (4212)92-98-04
Челябинск (351)202-03-61
Череповец (8202)49-02-64
Ярославль (4852)69-52-93

Единый адрес для всех регионов: drs@nt-rt.ru || www.danimaster.nt-rt.ru

