



КАПИЛЛЯРНЫЕ КОЛОННЫ DN-17

Архангельск (8182)63-90-72
Астана (7172)727-132
Астрахань (8512)99-46-04
Барнаул (3852)73-04-60
Белгород (4722)40-23-64
Брянск (4832)59-03-52
Владивосток (423)249-28-31
Волгоград (844)278-03-48
Вологда (8172)26-41-59
Воронеж (473)204-51-73
Екатеринбург (343)384-55-89
Иваново (4932)77-34-06
Ижевск (3412)26-03-58
Казань (843)206-01-48

Калининград (4012)72-03-81
Калуга (4842)92-23-67
Кемерово (3842)65-04-62
Киров (8332)68-02-04
Краснодар (861)203-40-90
Красноярск (391)204-63-61
Курск (4712)77-13-04
Липецк (4742)52-20-81
Магнитогорск (3519)55-03-13
Москва (495)268-04-70
Мурманск (8152)59-64-93
Набережные Челны (8552)20-53-41
Нижний Новгород (831)429-08-12
Новокузнецк (3843)20-46-81

Новосибирск (383)227-86-73
Омск (3812)21-46-40
Орел (4862)44-53-42
Оренбург (3532)37-68-04
Пенза (8412)22-31-16
Пермь (342)205-81-47
Ростов-на-Дону (863)308-18-15
Рязань (4912)46-61-64
Самара (846)206-03-16
Санкт-Петербург (812)309-46-40
Саратов (845)249-38-78
Севастополь (8692)22-31-93
Симферополь (3652)67-13-56
Смоленск (4812)29-41-54

Сочи (862)225-72-31
Ставрополь (8652)20-65-13
Сургут (3462)77-98-35
Тверь (4822)63-31-35
Томск (3822)98-41-53
Тула (4872)74-02-29
Тюмень (3452)66-21-18
Ульяновск (8422)24-23-59
Уфа (347)229-48-12
Хабаровск (4212)92-98-04
Челябинск (351)202-03-61
Череповец (8202)49-02-64
Ярославль (4852)69-52-93

DN-17

DN-17		15m		
ID	Film	Max Temp	Code	Chroma
0.25mm	0.15µm	320°C	9414.116 328	
0.25mm	0.25µm	320°C	9414.116 329	
0.25mm	0.45µm	310°C	9414.116 330	
0.25mm	1.00µm	300°C	9414.116 331	
0.32mm	0.15µm	320°C	9414.116 332	
0.32mm	0.25µm	320°C	9414.116 333	
0.32mm	0.45µm	310°C	9414.116 334	
0.32mm	1.00µm	300°C	9414.116 335	
0.53mm	0.15µm	320°C	9414.116 336	
0.53mm	0.25µm	320°C	9414.116 337	
0.53mm	0.45µm	310°C	9414.116 338	
0.53mm	1.00µm	300°C	9414.116 339	

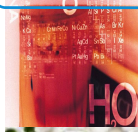
DN-17		50m		
ID	Film	Max Temp	Code	Chroma
0.25mm	0.15µm	320°C	9414.116 364	
0.25mm	0.25µm	320°C	9414.116 365	
0.25mm	0.45µm	310°C	9414.116 366	
0.25mm	1.00µm	300°C	9414.116 367	
0.32mm	0.15µm	320°C	9414.116 368	
0.32mm	0.25µm	320°C	9414.116 369	
0.32mm	0.45µm	310°C	9414.116 370	
0.32mm	1.00µm	300°C	9414.116 371	
0.53mm	0.15µm	320°C	9414.116 372	
0.53mm	0.25µm	320°C	9414.116 373	
0.53mm	0.45µm	310°C	9414.116 374	
0.53mm	1.00µm	300°C	9414.116 375	

DN-17		25m		
ID	Film	Max Temp	Code	Chroma
0.25mm	0.15µm	320°C	9414.116 340	
0.25mm	0.25µm	320°C	9414.116 341	
0.25mm	0.45µm	310°C	9414.116 342	
0.25mm	1.00µm	300°C	9414.116 343	
0.32mm	0.15µm	320°C	9414.116 344	
0.32mm	0.25µm	320°C	9414.116 345	
0.32mm	0.45µm	310°C	9414.116 346	
0.32mm	1.00µm	300°C	9414.116 347	
0.53mm	0.15µm	320°C	9414.116 348	
0.53mm	0.25µm	320°C	9414.116 349	
0.53mm	0.45µm	310°C	9414.116 350	
0.53mm	1.00µm	300°C	9414.116 351	

DN-17		60m		
ID	Film	Max Temp	Code	Chroma
0.25mm	0.15µm	320°C	9414.116 376	
0.25mm	0.25µm	320°C	9414.116 377	
0.25mm	0.45µm	310°C	9414.116 378	
0.25mm	1.00µm	300°C	9414.116 379	
0.32mm	0.15µm	320°C	9414.116 380	
0.32mm	0.25µm	320°C	9414.116 381	
0.32mm	0.45µm	310°C	9414.116 382	
0.32mm	1.00µm	300°C	9414.116 383	
0.53mm	0.15µm	320°C	9414.116 384	
0.53mm	0.25µm	320°C	9414.116 385	
0.53mm	0.45µm	310°C	9414.116 386	
0.53mm	1.00µm	300°C	9414.116 387	

DN-17		30m		
ID	Film	Max Temp	Code	Chroma
0.25mm	0.15µm	320°C	9414.116 352	
0.25mm	0.25µm	320°C	9414.116 353	
0.25mm	0.45µm	310°C	9414.116 354	
0.25mm	1.00µm	300°C	9414.116 355	
0.32mm	0.15µm	320°C	9414.116 356	
0.32mm	0.25µm	320°C	9414.116 357	
0.32mm	0.45µm	310°C	9414.116 358	
0.32mm	1.00µm	300°C	9414.116 359	
0.53mm	0.15µm	320°C	9414.116 360	
0.53mm	0.25µm	320°C	9414.116 361	
0.53mm	0.45µm	310°C	9414.116 362	
0.53mm	1.00µm	300°C	9414.116 363	

DN-17		Technical Specifications		
Every Column Individually Tested				
Test Certified and Grob Mixture included in each Column				
Instruction Manual included in each Column				
DANI DN-17 Capillary Column				
(50% Phenyl) - 50% methylpolysiloxane				
Intermediate Polarity				
Bonded and cross-linked				
Inertness				
Low bleeding				
Good thermal stability				
Similar to	HP™-50+,	Rtx™-50,	SP-2250,	SPB-50, SPB-17,
	BPX-50,	Rtx-65TG,	BPX-50,	CP-TAB-CB, 007-17,
	DB-17,	HP™-17,	SP-50,	CP SII 24CB, PE-17,
	ZB-50,	AT™-50		
Equivalent to	USP G3			



DN-17 HT

DN-17 HT 15m

ID	Film	Max Temp	Code	Chroma
0.25mm	0.10µm	380°C	9414.117 237	
0.32mm	0.10µm	380°C	9414.117 238	
0.53mm	0.10µm	380°C	9414.117 239	

DN-17 HT 50m

ID	Film	Max Temp	Code	Chroma
0.25mm	0.10µm	380°C	9414.117 246	
0.32mm	0.10µm	380°C	9414.117 247	
0.53mm	0.10µm	380°C	9414.117 248	

DN-17 HT 25m

ID	Film	Max Temp	Code	Chroma
0.25mm	0.10µm	380°C	9414.117 240	
0.32mm	0.10µm	380°C	9414.117 241	
0.53mm	0.10µm	380°C	9414.117 242	

DN-17 HT 60m

ID	Film	Max Temp	Code	Chroma
0.25mm	0.10µm	380°C	9414.117 249	
0.32mm	0.10µm	380°C	9414.117 250	
0.53mm	0.10µm	380°C	9414.117 251	

DN-17 HT 30m

ID	Film	Max Temp	Code	Chroma
0.25mm	0.10µm	380°C	9414.117 243	
0.32mm	0.10µm	380°C	9414.117 244	
0.53mm	0.10µm	380°C	9414.117 245	

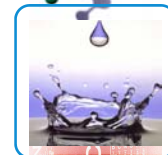
DN-17 HT Technical Specifications

Every Column Individually Tested
 Test Certified and Grob Mixture included in each Column
 Instruction Manual included in each Column

DANI DN-17 HT Capillary Column
 (50% Phenyl) - 50% methylpolysiloxane
 Intermediate Polarity
 Bonded and cross-linked
 Inertness
 Low bleeding
 Good thermal stability

Similar to HPTM-50+, RtxTM-50, SP-2250, SPB-50, SPB-17, BPX-50, Rtx-65TG, BPX-50, CP-TAB-CB, 007-17, DB-17, HPTM-17, SP-50, CP Sil 24CB, PE-17, ZB-50, ATTM-50

Equivalent to USP G3



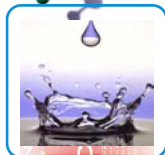
DN-17 FAST

DN-17 FAST 5m

ID	Film	Max Temp	Code	Chroma
0.05mm	0.05µm	350°C	9414.116 388	
0.05mm	0.10µm	350°C	9414.116 389	
0.10mm	0.10µm	350°C	9414.116 390	
0.10mm	0.20µm	350°C	9414.116 391	

DN-17 FAST 10m

ID	Film	Max Temp	Code	Chroma
0.05mm	0.05µm	350°C	9414.116 392	
0.05mm	0.10µm	350°C	9414.116 393	
0.10mm	0.10µm	350°C	9414.116 394	
0.10mm	0.20µm	350°C	9414.116 395	



DN-17 FAST

Technical Specifications

Every Column Individually Tested
 Test Certified and Grob Mixture included in each Column
 Instruction Manual included in each Column

DANI DN-17 FAST Capillary Column
 (50% Phenyl) - 50% methylpolysiloxane
 Intermediate Polarity
 Bonded and cross-linked
 Inertness
 Low bleeding
 Good thermal stability

Similar to HPTM-50+, RtxTM-50, SP-2250, SPB-50, SPB-17,
 BPX-50, Rtx-65TG, BPX-50, CP-TAB-CB, 007-17,
 DB-17, HPTM-17, SP-50, CP Sil 24CB, PE-17,
 ZB-50, ATTM-50

Equivalent to USP G3

DN-17 FAST HT

DN-17 FAST HT 5m

ID	Film	Max Temp	Code	Chroma
0.05mm	0.05µm	380°C	9414.117 285	
0.05mm	0.10µm	380°C	9414.117 286	
0.10mm	0.10µm	380°C	9414.117 287	

DN-17 FAST HT 10m

ID	Film	Max Temp	Code	Chroma
0.05mm	0.05µm	380°C	9414.117 288	
0.05mm	0.10µm	380°C	9414.117 289	
0.10mm	0.10µm	380°C	9414.117 290	

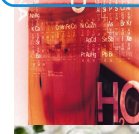
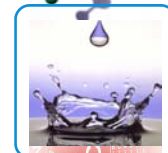
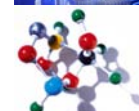
DN-17 FAST HT Technical Specifications

Every Column Individually Tested
 Test Certified and Grob Mixture included in each Column
 Instruction Manual included in each Column

DANI DN-17 FAST HT Capillary Column
 (50% Phenyl) - 50% methylpolysiloxane
 Intermediate Polarity
 Bonded and cross-linked
 Inertness
 Low bleeding
 Good thermal stability

Similar to HPTM-50+, RtxTM-50, SP-2250, SPB-50, SPB-17, BPX-50, Rtx-65TG, BPX-50, CP-TAB-CB, 007-17, DB-17, HPTM-17, SP-50, CP Sil 24CB, PE-17, ZB-50, ATTM-50

Equivalent to USP G3



По вопросам продажи и поддержки обращайтесь:

Архангельск (8182)63-90-72
Астана (7172)727-132
Астрахань (8512)99-46-04
Барнаул (3852)73-04-60
Белгород (4722)40-23-64
Брянск (4832)59-03-52
Владивосток (423)249-28-31
Волгоград (844)278-03-48
Вологда (8172)26-41-59
Воронеж (473)204-51-73
Екатеринбург (343)384-55-89
Иваново (4932)77-34-06
Ижевск (3412)26-03-58
Казань (843)206-01-48

Калининград (4012)72-03-81
Калуга (4842)92-23-67
Кемерово (3842)65-04-62
Киров (8332)68-02-04
Краснодар (861)203-40-90
Красноярск (391)204-63-61
Курск (4712)77-13-04
Липецк (4742)52-20-81
Магнитогорск (3519)55-03-13
Москва (495)268-04-70
Мурманск (8152)59-64-93
Набережные Челны (8552)20-53-41
Нижний Новгород (831)429-08-12
Новокузнецк (3843)20-46-81

Новосибирск (383)227-86-73
Омск (3812)21-46-40
Орел (4862)44-53-42
Оренбург (3532)37-68-04
Пенза (8412)22-31-16
Пермь (342)205-81-47
Ростов-на-Дону (863)308-18-15
Рязань (4912)46-61-64
Самара (846)206-03-16
Санкт-Петербург (812)309-46-40
Саратов (845)249-38-78
Севастополь (8692)22-31-93
Симферополь (3652)67-13-56
Смоленск (4812)29-41-54

Сочи (862)225-72-31
Ставрополь (8652)20-65-13
Сургут (3462)77-98-35
Тверь (4822)63-31-35
Томск (3822)98-41-53
Тула (4872)74-02-29
Тюмень (3452)66-21-18
Ульяновск (8422)24-23-59
Уфа (347)229-48-12
Хабаровск (4212)92-98-04
Челябинск (351)202-03-61
Череповец (8202)49-02-64
Ярославль (4852)69-52-93

Единый адрес для всех регионов: drs@nt-rt.ru || www.danimaster.nt-rt.ru

