



КАПИЛЛЯРНЫЕ КОЛОННЫ DN-Beta

Архангельск (8182)63-90-72
Астана (7172)727-132
Астрахань (8512)99-46-04
Барнаул (3852)73-04-60
Белгород (4722)40-23-64
Брянск (4832)59-03-52
Владивосток (423)249-28-31
Волгоград (844)278-03-48
Вологда (8172)26-41-59
Воронеж (473)204-51-73
Екатеринбург (343)384-55-89
Иваново (4932)77-34-06
Ижевск (3412)26-03-58
Казань (843)206-01-48

Калининград (4012)72-03-81
Калуга (4842)92-23-67
Кемерово (3842)65-04-62
Киров (8332)68-02-04
Краснодар (861)203-40-90
Красноярск (391)204-63-61
Курск (4712)77-13-04
Липецк (4742)52-20-81
Магнитогорск (3519)55-03-13
Москва (495)268-04-70
Мурманск (8152)59-64-93
Набережные Челны (8552)20-53-41
Нижний Новгород (831)429-08-12
Новокузнецк (3843)20-46-81

Новосибирск (383)227-86-73
Омск (3812)21-46-40
Орел (4862)44-53-42
Оренбург (3532)37-68-04
Пенза (8412)22-31-16
Пермь (342)205-81-47
Ростов-на-Дону (863)308-18-15
Рязань (4912)46-61-64
Самара (846)206-03-16
Санкт-Петербург (812)309-46-40
Саратов (845)249-38-78
Севастополь (8692)22-31-93
Симферополь (3652)67-13-56
Смоленск (4812)29-41-54

Сочи (862)225-72-31
Ставрополь (8652)20-65-13
Сургут (3462)77-98-35
Тверь (4822)63-31-35
Томск (3822)98-41-53
Тула (4872)74-02-29
Тюмень (3452)66-21-18
Ульяновск (8422)24-23-59
Уфа (347)229-48-12
Хабаровск (4212)92-98-04
Челябинск (351)202-03-61
Череповец (8202)49-02-64
Ярославль (4852)69-52-93

DN-Beta 1

Chiral Columns

DN-Beta 1 10m

ID	Film	Max Temp	Code	Chroma
0.25mm	0.25µm	230°C	9414.117 171	

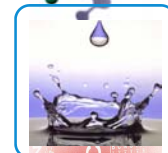
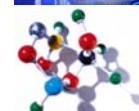
DN-Beta 1 25m

ID	Film	Max Temp	Code	Chroma
0.25mm	0.25µm	230°C	9414.117 172	

DN-Beta 1 Technical Specifications

Every Column Individually Tested
 Test Certified and Grob Mixture included in each Column
 Instruction Manual included in each Column

DANI DN-Beta 1 Chiral Capillary Column
 Dimethyl Tert Butyl Silyl BETA Cyclodextrine
 Chiral
 Bonded and cross-linked
 Inertness
 Low bleeding
 Good thermal stability



DN-Beta 2

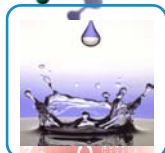
Chiral Columns

DN-Beta 2 10m

ID	Film	Max Temp	Code	Chroma
0.25mm	0.25µm	230°C	9414.117 173	

DN-Beta 2 25m

ID	Film	Max Temp	Code	Chroma
0.25mm	0.25µm	230°C	9414.117 174	055



DN-Beta 2 Technical Specifications

Every Column Individually Tested
 Test Certified and Grob Mixture included in each Column
 Instruction Manual included in each Column

DANI DN-Beta 2 Chiral Capillary Column
 Diacetyl Tert Butyl Silyl BETA Cyclodextrine
 Chiral
 Bonded and cross-linked
 Inertness
 Low bleeding
 Good thermal stability

DN-Beta 2

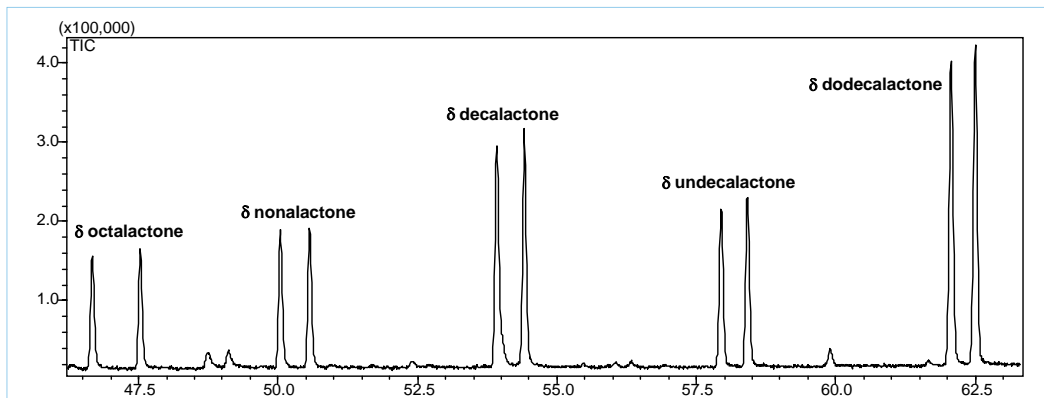
Chromatograms

DN-Beta 2 25m 0.25mm 0.25 μ m

Delta Lactones - C8-C12

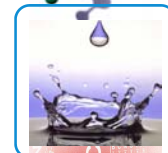
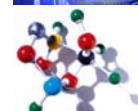
Chromatographic Conditions

Oven	80°C - 1.5°C/min - 200°C
Injection	Split - 250°C - 1:70
Carrier Gas	Hydrogen - 70 kPa
Injection volume	1 μ L
Detector	FID - 250°C



Courtesy of Prof. C. Bicchi, C. Brunelli
 Università di Torino - Dipartimento Scienza e Tecnologia del Farmaco Via P. Giuria, 9 - Torino - ITALY

055



DN-Beta 3

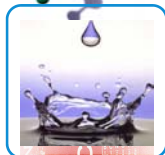
Chiral Columns

DN-Beta 3 10m

ID	Film	Max Temp	Code	Chroma
0.25mm	0.25 μ m	230°C	9414.117 175	

DN-Beta 3 25m

ID	Film	Max Temp	Code	Chroma
0.25mm	0.25 μ m	230°C	9414.117 176	056



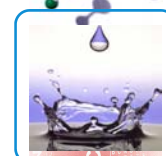
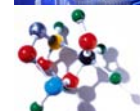
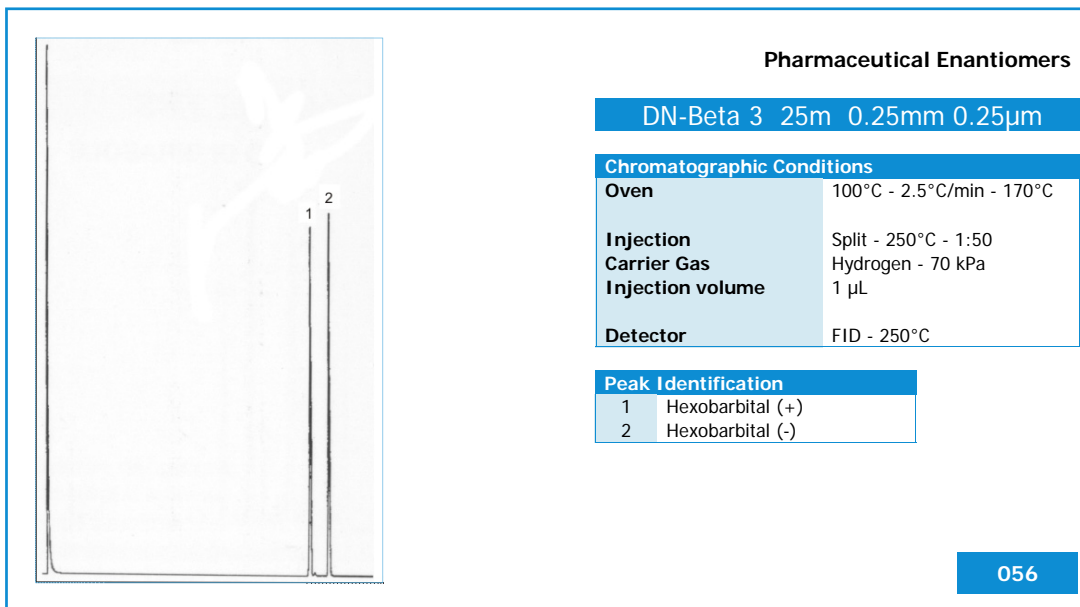
DN-Beta 3 Technical Specifications

Every Column Individually Tested
 Test Certified and Grob Mixture included in each Column
 Instruction Manual included in each Column

DANI DN-Beta 3 Chiral Capillary Column
 Dimethyl Pentyl BETA Cyclodextrine
 Chiral
 Bonded and cross-linked
 Inertness
 Low bleeding
 Good thermal stability

DN-Beta 3

Chromatograms



DN-Beta 4

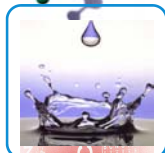
Chiral Columns

DN-Beta 4 10m

ID	Film	Max Temp	Code	Chroma
0.25mm	0.25µm	230°C	9414.117 177	

DN-Beta 4 25m

ID	Film	Max Temp	Code	Chroma
0.25mm	0.25µm	230°C	9414.117 178	057/058



DN-Beta 4

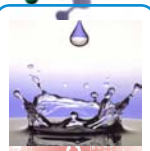
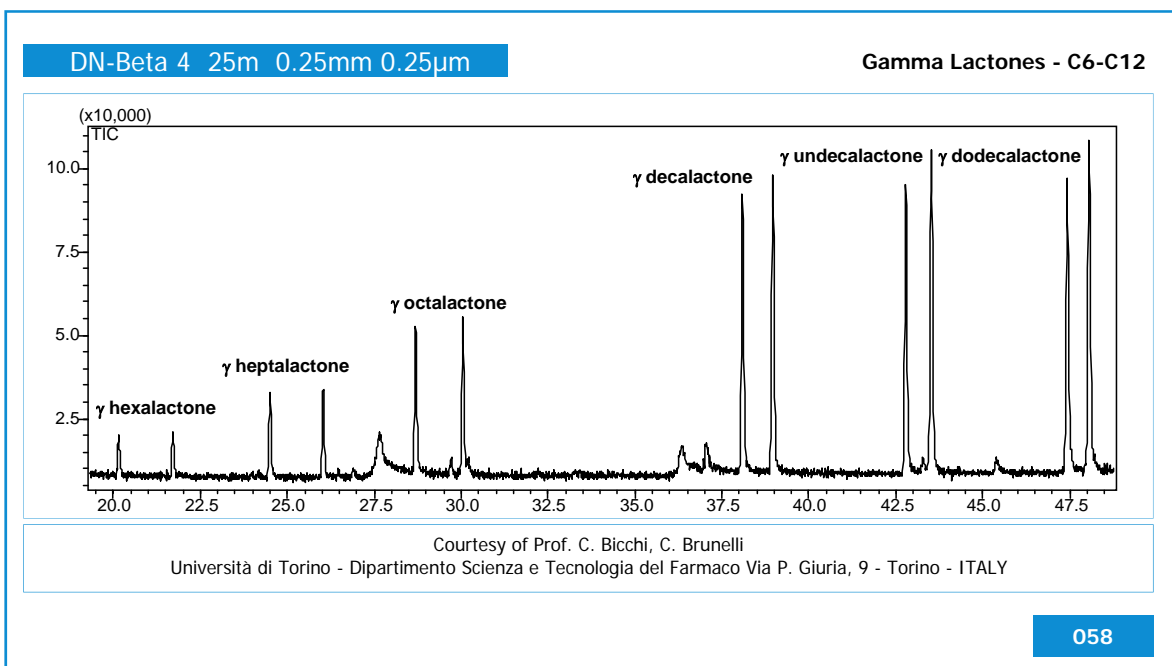
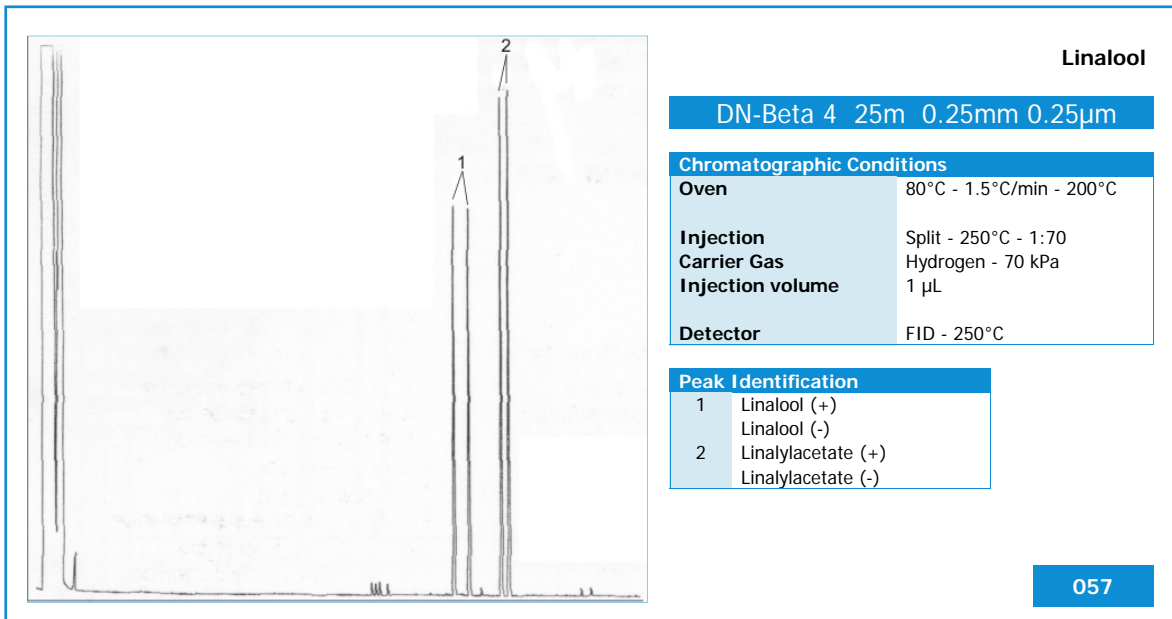
Technical Specifications

Every Column Individually Tested
 Test Certified and Grob Mixture included in each Column
 Instruction Manual included in each Column

DANI DN-Beta 4 Chiral Capillary Column
 Diethyl Tert Butyl Silyl BETA Cyclodextrine
 Chiral
 Bonded and cross-linked
 Inertness
 Low bleeding
 Good thermal stability

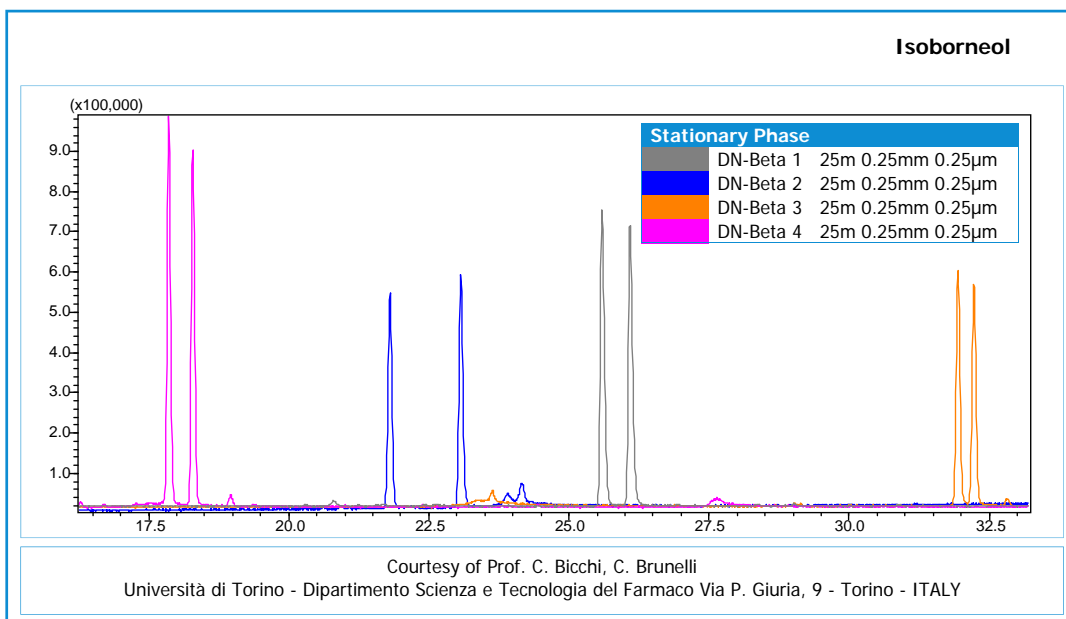
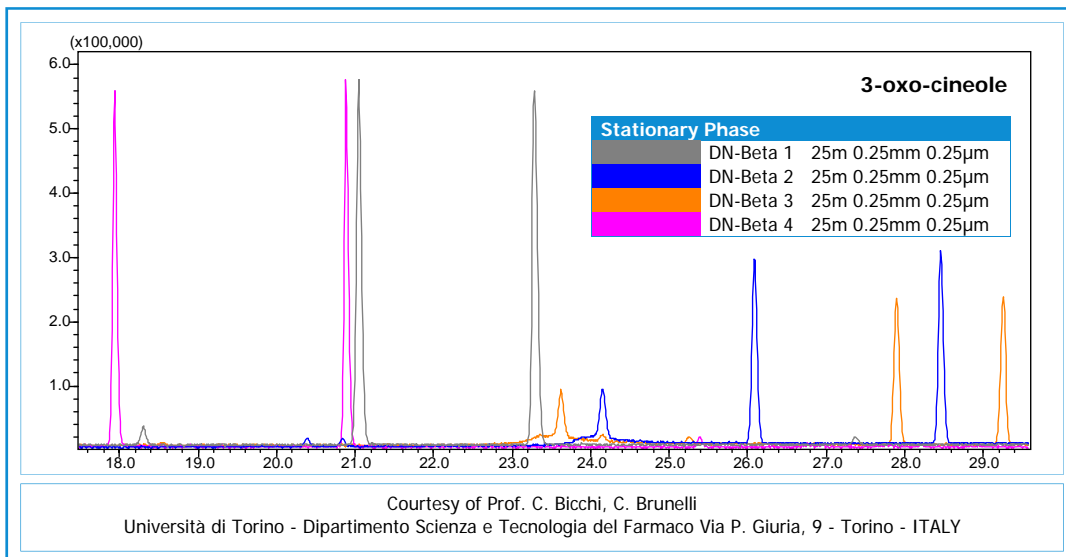
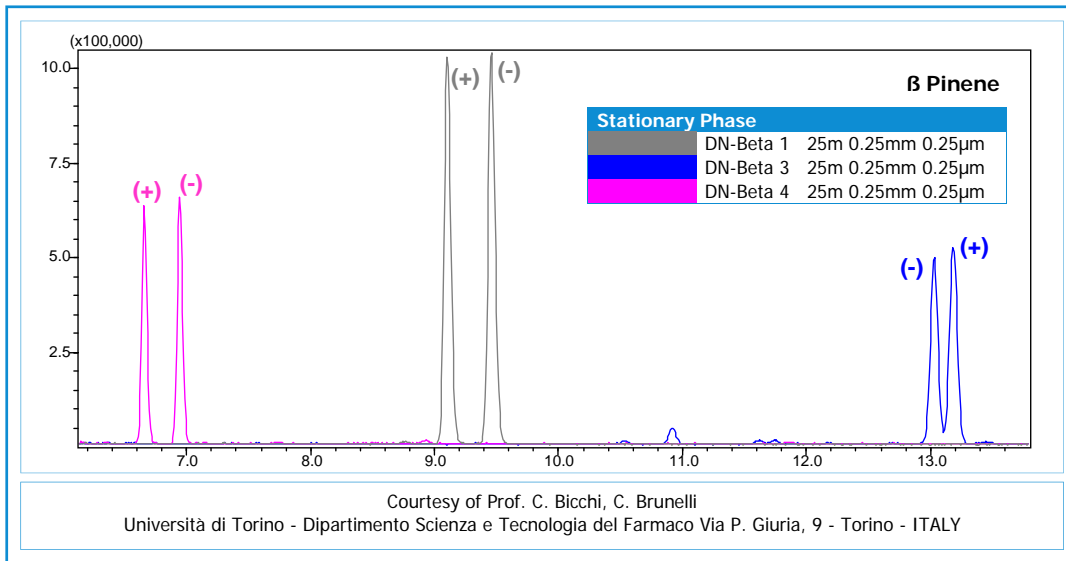
DN-Beta 4

Chromatograms

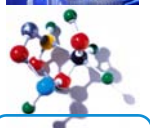
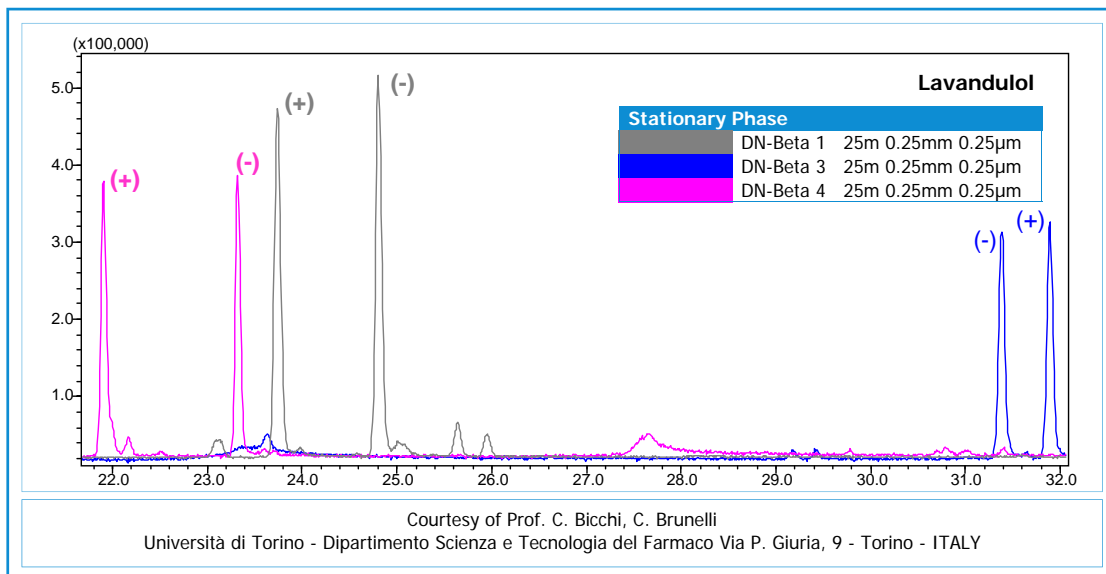
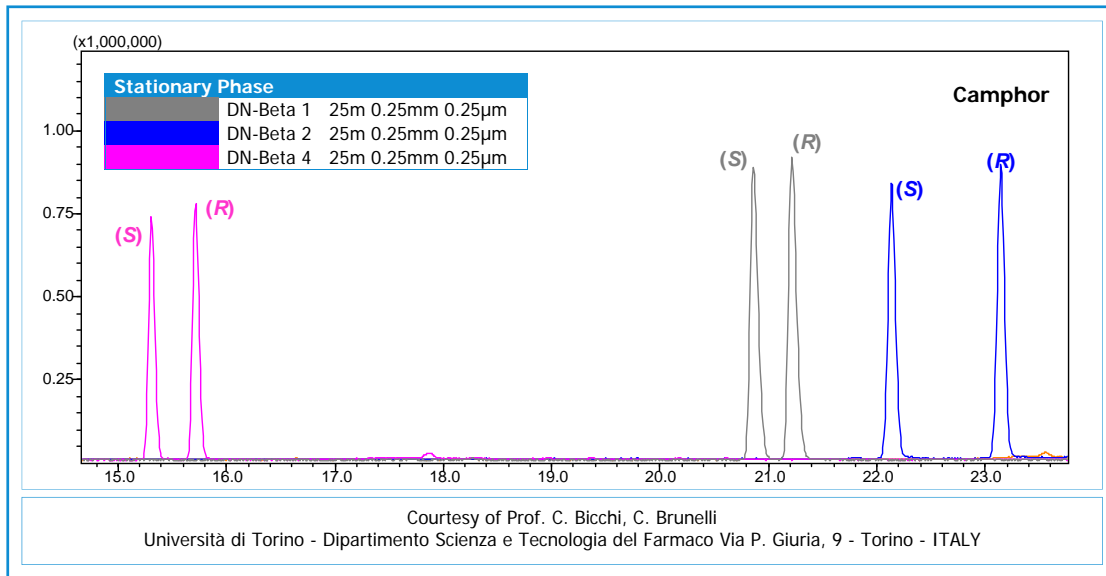


DN-Beta

Chromatograms



DN-Beta
Chromatograms



По вопросам продажи и поддержки обращайтесь:

Архангельск (8182)63-90-72
Астана (7172)727-132
Астрахань (8512)99-46-04
Барнаул (3852)73-04-60
Белгород (4722)40-23-64
Брянск (4832)59-03-52
Владивосток (423)249-28-31
Волгоград (844)278-03-48
Вологда (8172)26-41-59
Воронеж (473)204-51-73
Екатеринбург (343)384-55-89
Иваново (4932)77-34-06
Ижевск (3412)26-03-58
Казань (843)206-01-48

Калининград (4012)72-03-81
Калуга (4842)92-23-67
Кемерово (3842)65-04-62
Киров (8332)68-02-04
Краснодар (861)203-40-90
Красноярск (391)204-63-61
Курск (4712)77-13-04
Липецк (4742)52-20-81
Магнитогорск (3519)55-03-13
Москва (495)268-04-70
Мурманск (8152)59-64-93
Набережные Челны (8552)20-53-41
Нижний Новгород (831)429-08-12
Новокузнецк (3843)20-46-81

Новосибирск (383)227-86-73
Омск (3812)21-46-40
Орел (4862)44-53-42
Оренбург (3532)37-68-04
Пенза (8412)22-31-16
Пермь (342)205-81-47
Ростов-на-Дону (863)308-18-15
Рязань (4912)46-61-64
Самара (846)206-03-16
Санкт-Петербург (812)309-46-40
Саратов (845)249-38-78
Севастополь (8692)22-31-93
Симферополь (3652)67-13-56
Смоленск (4812)29-41-54

Сочи (862)225-72-31
Ставрополь (8652)20-65-13
Сургут (3462)77-98-35
Тверь (4822)63-31-35
Томск (3822)98-41-53
Тула (4872)74-02-29
Тюмень (3452)66-21-18
Ульяновск (8422)24-23-59
Уфа (347)229-48-12
Хабаровск (4212)92-98-04
Челябинск (351)202-03-61
Череповец (8202)49-02-64
Ярославль (4852)69-52-93

Единый адрес для всех регионов: drs@nt-rt.ru || www.danimaster.nt-rt.ru

