



КАПИЛЛЯРНЫЕ КОЛОННЫ DN-WAX

Архангельск (8182)63-90-72
Астана (7172)727-132
Астрахань (8512)99-46-04
Барнаул (3852)73-04-60
Белгород (4722)40-23-64
Брянск (4832)59-03-52
Владивосток (423)249-28-31
Волгоград (844)278-03-48
Вологда (8172)26-41-59
Воронеж (473)204-51-73
Екатеринбург (343)384-55-89
Иваново (4932)77-34-06
Ижевск (3412)26-03-58
Казань (843)206-01-48

Калининград (4012)72-03-81
Калуга (4842)92-23-67
Кемерово (3842)65-04-62
Киров (8332)68-02-04
Краснодар (861)203-40-90
Красноярск (391)204-63-61
Курск (4712)77-13-04
Липецк (4742)52-20-81
Магнитогорск (3519)55-03-13
Москва (495)268-04-70
Мурманск (8152)59-64-93
Набережные Челны (8552)20-53-41
Нижний Новгород (831)429-08-12
Новокузнецк (3843)20-46-81

Новосибирск (383)227-86-73
Омск (3812)21-46-40
Орел (4862)44-53-42
Оренбург (3532)37-68-04
Пенза (8412)22-31-16
Пермь (342)205-81-47
Ростов-на-Дону (863)308-18-15
Рязань (4912)46-61-64
Самара (846)206-03-16
Санкт-Петербург (812)309-46-40
Саратов (845)249-38-78
Севастополь (8692)22-31-93
Симферополь (3652)67-13-56
Смоленск (4812)29-41-54

Сочи (862)225-72-31
Ставрополь (8652)20-65-13
Сургут (3462)77-98-35
Тверь (4822)63-31-35
Томск (3822)98-41-53
Тула (4872)74-02-29
Тюмень (3452)66-21-18
Ульяновск (8422)24-23-59
Уфа (347)229-48-12
Хабаровск (4212)92-98-04
Челябинск (351)202-03-61
Череповец (8202)49-02-64
Ярославль (4852)69-52-93

DN-WAX

DN-WAX 15m

ID	Film	Max Temp	Code	Chroma
0.25mm	0.15µm	250°C	9414.116 753	
0.25mm	0.25µm	250°C	9414.116 754	
0.25mm	0.45µm	250°C	9414.116 755	
0.25mm	1.00µm	250°C	9414.116 756	
0.32mm	0.15µm	250°C	9414.116 757	
0.32mm	0.25µm	250°C	9414.116 758	
0.32mm	0.45µm	250°C	9414.116 759	
0.32mm	1.00µm	250°C	9414.116 760	
0.53mm	0.15µm	250°C	9414.116 761	
0.53mm	0.25µm	250°C	9414.116 762	
0.53mm	0.45µm	250°C	9414.116 763	
0.53mm	1.00µm	250°C	9414.116 764	

DN-WAX 50m

ID	Film	Max Temp	Code	Chroma
0.25mm	0.15µm	250°C	9414.116 789	
0.25mm	0.25µm	250°C	9414.116 790	
0.25mm	0.45µm	250°C	9414.116 791	
0.25mm	1.00µm	250°C	9414.116 792	
0.32mm	0.15µm	250°C	9414.116 793	
0.32mm	0.25µm	250°C	9414.116 794	
0.32mm	0.45µm	250°C	9414.116 795	
0.32mm	1.00µm	250°C	9414.116 796	
0.53mm	0.15µm	250°C	9414.116 797	
0.53mm	0.25µm	250°C	9414.116 798	
0.53mm	0.45µm	250°C	9414.116 799	
0.53mm	1.00µm	250°C	9414.116 800	

DN-WAX 25m

ID	Film	Max Temp	Code	Chroma
0.25mm	0.15µm	250°C	9414.116 765	
0.25mm	0.25µm	250°C	9414.116 766	035
0.25mm	0.45µm	250°C	9414.116 767	
0.25mm	1.00µm	250°C	9414.116 768	
0.32mm	0.15µm	250°C	9414.116 769	
0.32mm	0.25µm	250°C	9414.116 770	029/031/033
0.32mm	0.45µm	250°C	9414.116 771	
0.32mm	1.00µm	250°C	9414.116 772	032
0.53mm	0.15µm	250°C	9414.116 773	
0.53mm	0.25µm	250°C	9414.116 774	
0.53mm	0.45µm	250°C	9414.116 775	
0.53mm	1.00µm	250°C	9414.116 776	030

DN-WAX 60m

ID	Film	Max Temp	Code	Chroma
0.25mm	0.15µm	250°C	9414.116 801	
0.25mm	0.25µm	250°C	9414.116 802	
0.25mm	0.45µm	250°C	9414.116 803	
0.25mm	1.00µm	250°C	9414.116 804	
0.32mm	0.15µm	250°C	9414.116 805	
0.32mm	0.25µm	250°C	9414.116 806	
0.32mm	0.45µm	250°C	9414.116 807	
0.32mm	1.00µm	250°C	9414.116 808	
0.53mm	0.15µm	250°C	9414.116 809	
0.53mm	0.25µm	250°C	9414.116 810	
0.53mm	0.45µm	250°C	9414.116 811	
0.53mm	1.00µm	250°C	9414.116 812	

DN-WAX 30m

ID	Film	Max Temp	Code	Chroma
0.25mm	0.15µm	250°C	9414.116 777	
0.25mm	0.25µm	250°C	9414.116 778	
0.25mm	0.45µm	250°C	9414.116 779	
0.25mm	1.00µm	250°C	9414.116 780	
0.32mm	0.15µm	250°C	9414.116 781	
0.32mm	0.25µm	250°C	9414.116 782	034
0.32mm	0.45µm	250°C	9414.116 783	
0.32mm	1.00µm	250°C	9414.116 784	
0.53mm	0.15µm	250°C	9414.116 785	
0.53mm	0.25µm	250°C	9414.116 786	
0.53mm	0.45µm	250°C	9414.116 787	
0.53mm	1.00µm	250°C	9414.116 788	062

DN-WAX Technical Specifications

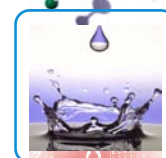
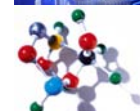
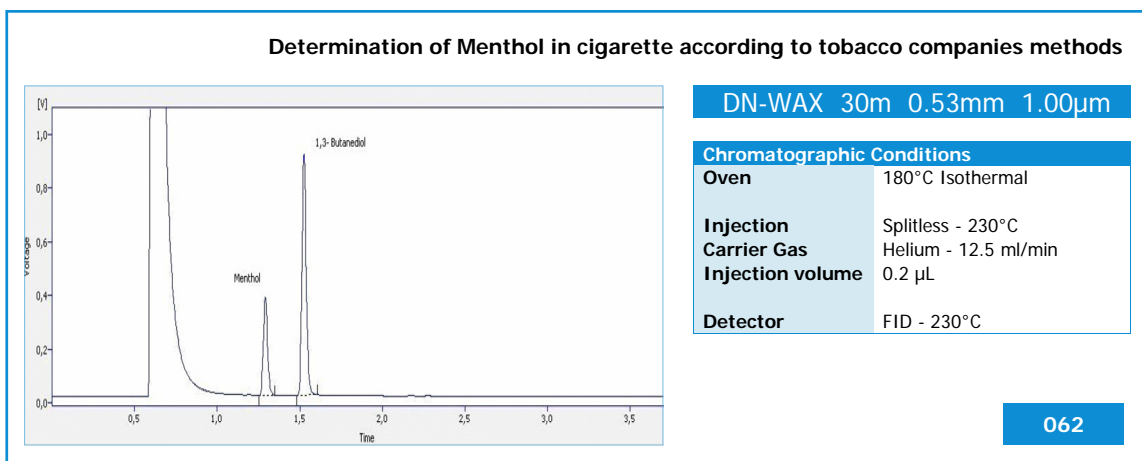
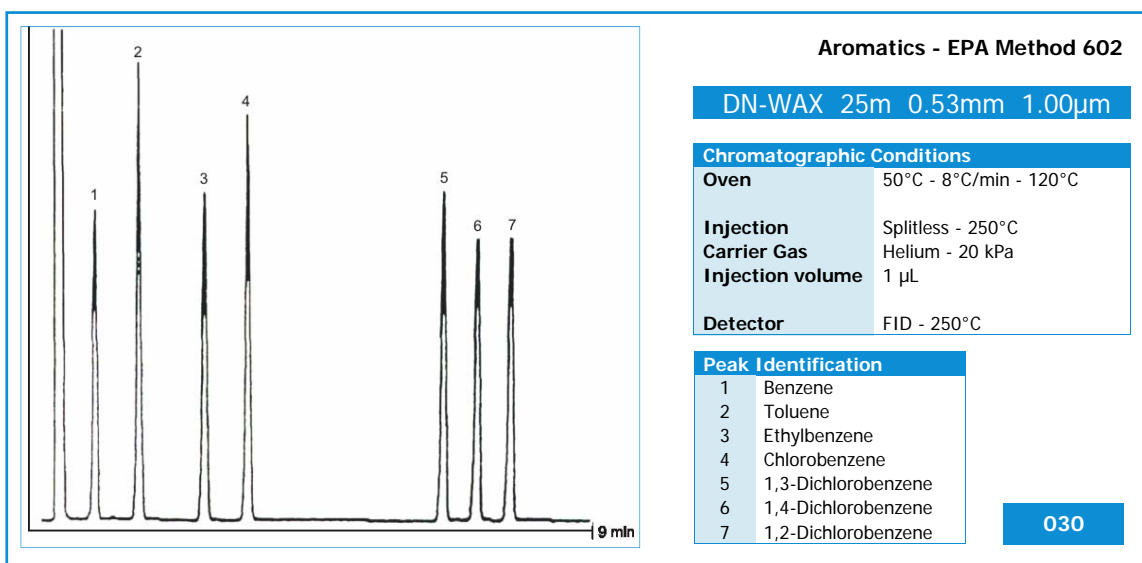
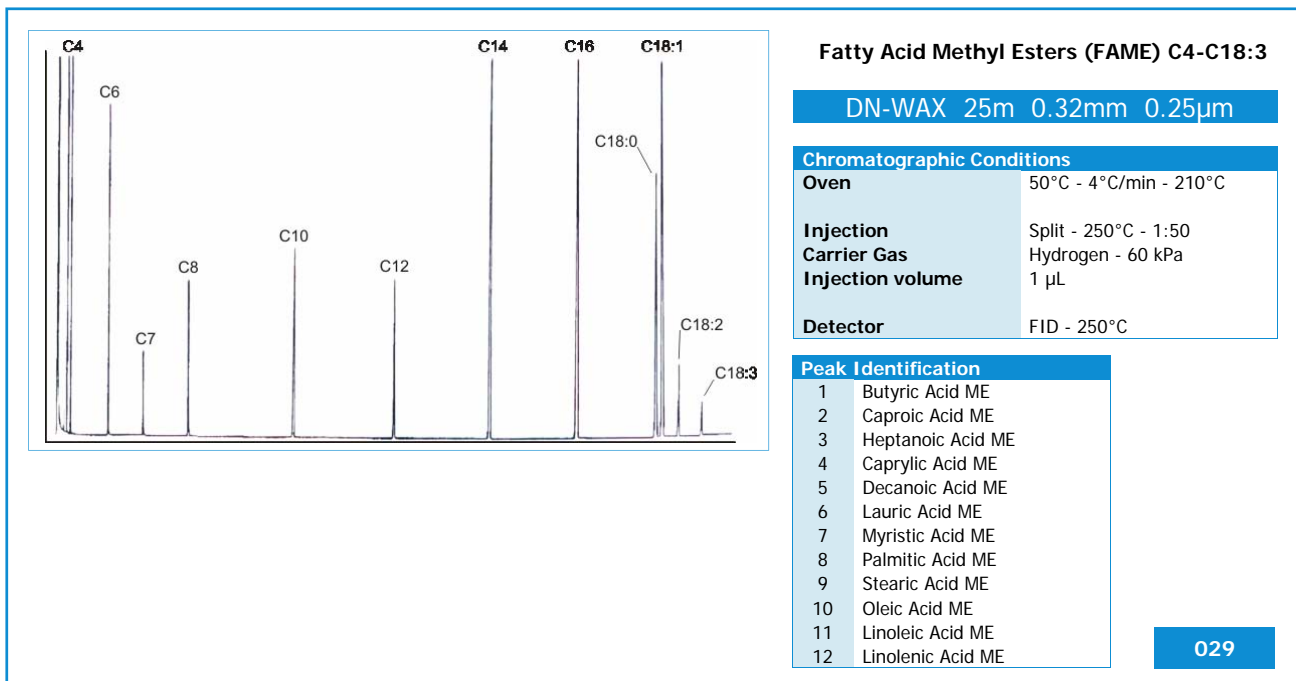
Every Column Individually Tested
 Test Certified and Grob Mixture included in each Column
 Instruction Manual included in each Column

DANI DN-WAX Capillary Column
 Polyethyleneglycol
 Polar
 Bonded and cross-linked
 Inertness
 Low bleeding
 Good thermal stability

Similar to 007-CW, Carbowax® 20M, CP-Wax 52CB, DB™-WAX, Rtx™-WAX, HP-20M, HP™-Wax, Innowax™, Omegawax, Stabilwax®, SUPELCOWAX®-10, SUPEROX® II, BP-20, ZB-WAX, AT™-WAX, EC™-WAX

Equivalent to USP G14, G15, G16, G20, G39





DN-WAX

Chromatograms

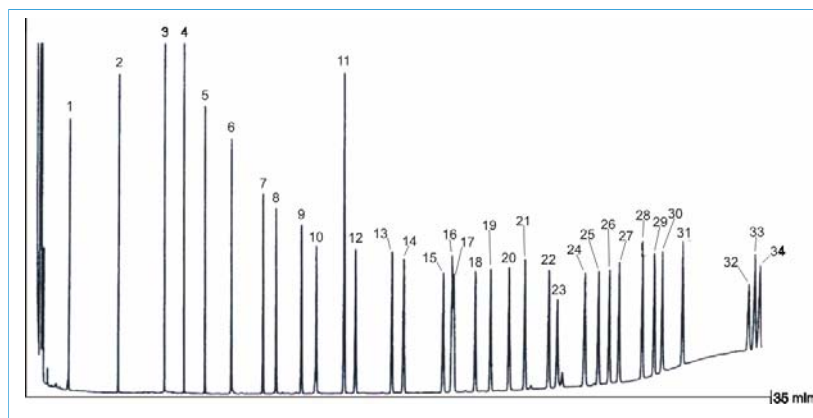
Peak Identification	
1	C6:0
2	C8:0
3	C10:0
4	C11:0
5	C12:0
6	C13:0
7	C14:0
8	C14:1 n-5
9	C15:0
10	C15:1 n-5
11	C16:0
12	C16:1 n-7
13	C17:0
14	C17:1 n-7
15	C18:0
16	C18:1 cis n-9
17	C18:1 trans n-9
18	C18:2 n-6
19	C18:3 n-6
20	C18:3 n-3
21	C18:4 n-3
22	C20:0
23	C20:1 n-9
24	C20:2 n-6
25	C20:3 n-6
26	C20:4 n-6
27	C20:3 n-3
28	C20:5
29	C22:0
30	C22:1 n-9
31	C22:2 n-6
32	C24:0
33	C22:6 n-3
34	C24:1 n-9

Fatty Acid Methyl Esters (FAME)

DN-WAX 25m 0.32mm 0.25µm

Chromatographic Conditions

Oven	60°C - 2 min - 15°C/min - 105°C - 1 min - 3°C/min - 195°C - 1 min - 5°C/min - 220°C
Injection	On column
Carrier Gas	Hydrogen - 30 kPa
Injection volume	1 µL
Detector	FID



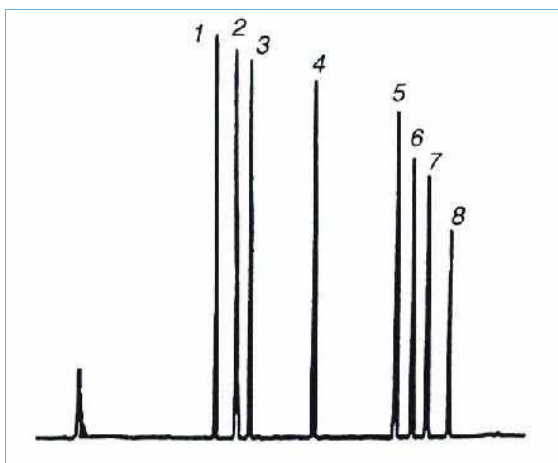
031

N-Nitrosamines

DN-WAX 25m 0.32mm 1.00µm

Chromatographic Conditions

Oven	60°C - 0.5 min - 25°C/min - 130° - 2 min - 25°C/min - 160°C
Injection	Splitless
Carrier Gas	Helium - 60 kPa
Injection volume	1 µL
Detector	NPD

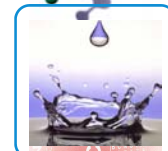
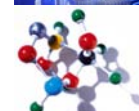
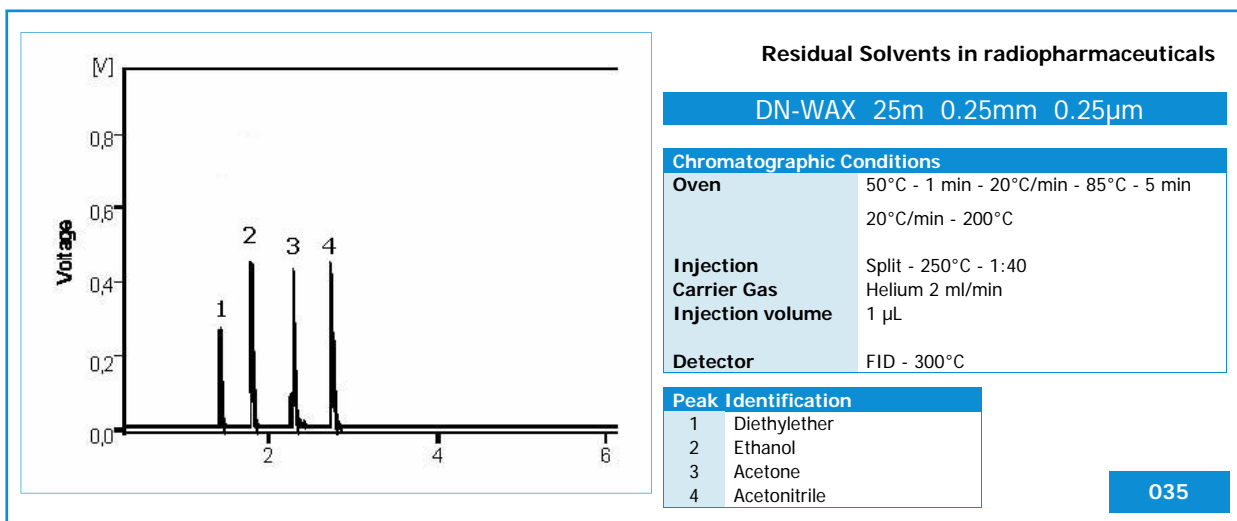
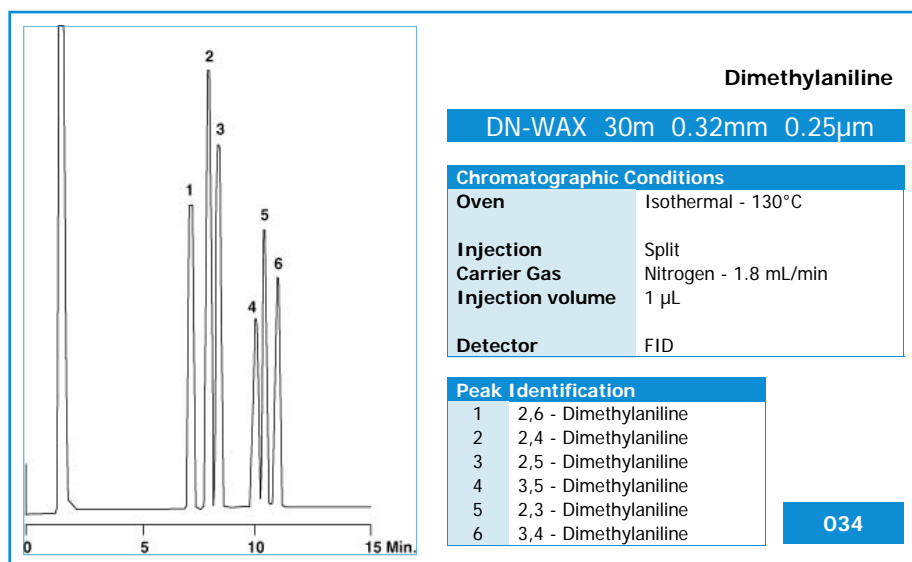
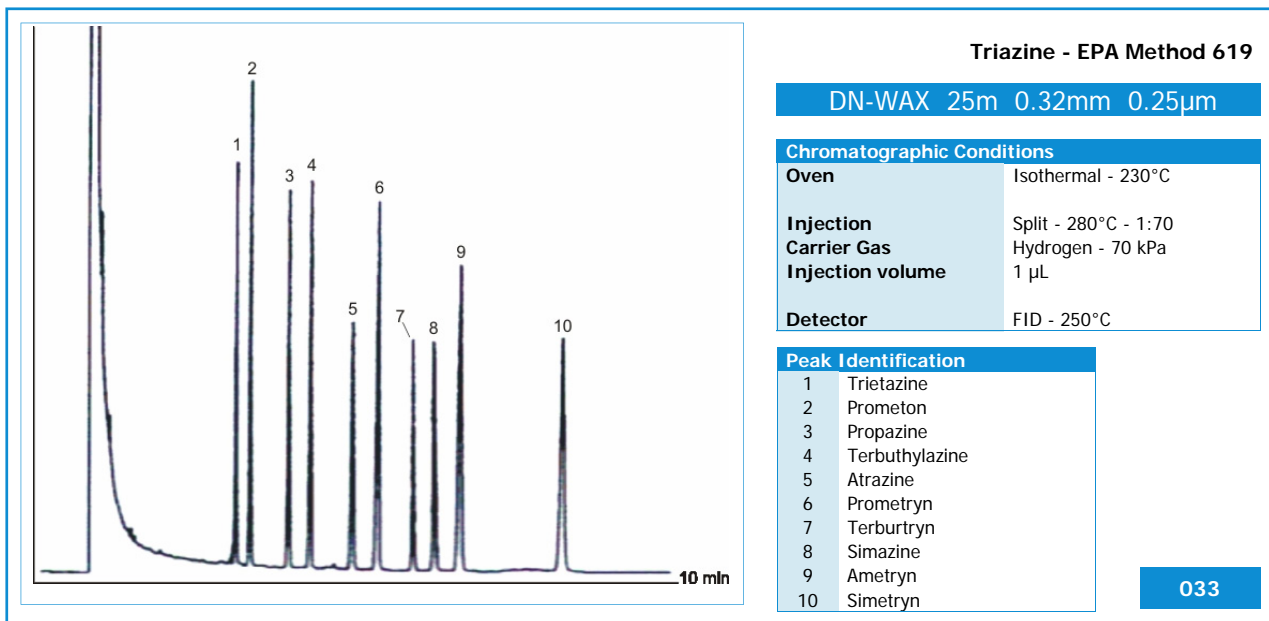


Peak Identification

1	N-nitrosodimethylamine
2	N-nitrosomethylamine
3	N-nitrosodiethylamine
4	N-nitrosodi-n-propylamine
5	N-nitrosodi-n-butylamine
6	N-nitrosopiperidine
7	N-nitrosopyrrolidine
8	N-nitrosomorpholine

032





DN-WAX MS

DN-WAX MS 15m

ID	Film	Max Temp	Code	Chroma
0.25mm	0.15µm	250°C	9414.116 813	
0.25mm	0.25µm	250°C	9414.116 814	
0.32mm	0.15µm	250°C	9414.116 815	
0.32mm	0.25µm	250°C	9414.116 816	

DN-WAX MS 50m

ID	Film	Max Temp	Code	Chroma
0.25mm	0.15µm	250°C	9414.116 825	
0.25mm	0.25µm	250°C	9414.116 826	
0.32mm	0.15µm	250°C	9414.116 827	
0.32mm	0.25µm	250°C	9414.116 828	

DN-WAX MS 25m

ID	Film	Max Temp	Code	Chroma
0.25mm	0.15µm	250°C	9414.116 817	
0.25mm	0.25µm	250°C	9414.116 818	
0.32mm	0.15µm	250°C	9414.116 819	
0.32mm	0.25µm	250°C	9414.116 820	

DN-WAX MS 60m

ID	Film	Max Temp	Code	Chroma
0.25mm	0.15µm	250°C	9414.116 829	
0.25mm	0.25µm	250°C	9414.116 830	
0.32mm	0.15µm	250°C	9414.116 831	
0.32mm	0.25µm	250°C	9414.116 832	

DN-WAX MS 30m

ID	Film	Max Temp	Code	Chroma
0.25mm	0.15µm	250°C	9414.116 821	
0.25mm	0.25µm	250°C	9414.116 822	
0.32mm	0.15µm	250°C	9414.116 823	
0.32mm	0.25µm	250°C	9414.116 824	

DN-WAX MS Technical Specifications

Every Column Individually Tested
 Test Certified and Grob Mixture included in each Column
 Instruction Manual included in each Column

DANI DN-WAX MS Capillary Column
 Polyethyleneglycol
 Polar
 Bonded and cross-linked
 Inertness
 Low bleeding
 Good thermal stability

Similar to 007-CW, Carbowax® 20M, CP-Wax 52CB, DB™-WAX, Rtx™-WAX, HP-20M, HP™-Wax, Innowax™, Omegawax, Stabilwax®, SUPELCOWAX®-10, SUPEROX®II, BP-20, ZB-WAX, AT™-WAX

Equivalent to USP G14, G15, G16, G20, G39



DN-WAX FAST

DN-WAX FAST 5m

ID	Film	Max Temp	Code	Chroma
0.05mm	0.05µm	250°C	9414.116 833	
0.05mm	0.10µm	250°C	9414.116 834	
0.10mm	0.10µm	250°C	9414.116 835	036/037
0.10mm	0.20µm	250°C	9414.116 836	

DN-WAX FAST 10m

ID	Film	Max Temp	Code	Chroma
0.05mm	0.05µm	250°C	9414.116 837	
0.05mm	0.10µm	250°C	9414.116 838	
0.10mm	0.10µm	250°C	9414.116 839	
0.10mm	0.20µm	250°C	9414.116 840	

DN-WAX FAST 15m

ID	Film	Max Temp	Code	Chroma
0.10mm	0.10µm	250°C	9414.117 300	063/064/065

DN-WAX FAST Technical Specifications

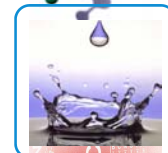
Every Column Individually Tested
 Test Certified and Grob Mixture included in each Column
 Instruction Manual included in each Column

DANI DN-WAX FAST Capillary Column

Polyethyleneglycol
 Polar
 Bonded and cross-linked
 Inertness
 Low bleeding
 Good thermal stability

Similar to 007-CW, Carbowax® 20M, CP-Wax 52CB, DB™-WAX, Rtx™-WAX, HP-20M, HP™-Wax, Innowax™, Omegawax, Stabilwax®, SUPELCOWAX® -10, SUPEROX® II, BP-20, ZB-WAX, AT™-WAX

Equivalent to USP G14, G15, G16, G20, G39



DN-WAX FAST

Chromatograms

Peak Identification

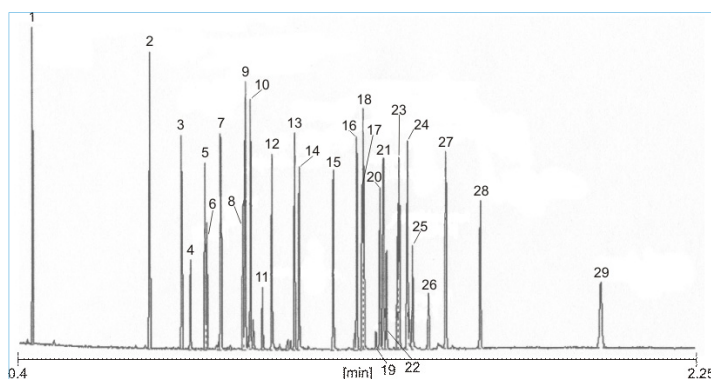
1	/
2	α Me-Ionone
3	/
4	Limonene
5	Linalol
6	Me-Octynoate
7	Neral
8	Veratrol
9	Geranial
10	α iso Me-Ionone
11	Geraniol
12	Alc. Benzyl
13	OH-Citronellal
14	Cynnamal
15	Citronellal
16	Eugenol
17	Amyl Cynamal
18	Anysol
19	Cynamol
20	Farnesol 1
21	Isoeugenol
22	Hexyl Cynamal
23	Amyl Cynamol
24	1-Ph-10
25	Coumarine
26	Lyral 2
27	Bz. Benzoate
28	Bz. Salicylate
29	Bz. Cynamate

Allergens

DN-WAX FAST 5m 0.10mm 0.10 μ m

Chromatographic Conditions

Oven	50°C - 0.1 min - 50°C/min - 230°C - 2 min
Injection	Split - 230°C - 1:200
Carrier Gas	Hydrogen - 0.5 ml/min
Injection volume	1 μ L
Detector	FID - 250°C



Courtesy of Prof. C. Bicchi, C. Brunelli
Università di Torino - Dipartimento Scienza e Tecnologia del Farmaco
Via P. Giuria, 9 - Torino - ITALY

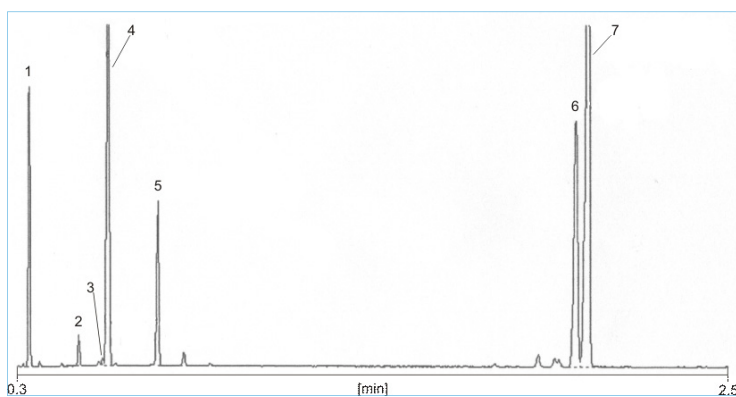
036

Bergamot

DN-WAX FAST 5m 0.10mm 0.10 μ m

Chromatographic Conditions

Oven	50°C - 0.1 min - 30°C/min - 250°C - 5 min
Injection	Split - 230°C - 1:200
Carrier Gas	Hydrogen - 0.5 ml/min
Injection volume	1 μ L
Detector	FID - 250°C



Peak Identification

1	β -Pinene
2	Myrcene
3	p-Cimene
4	Limonene
5	γ -Terpinene
6	Linalool
7	Linalyl Acetate

Courtesy of Prof. C. Bicchi, C. Brunelli
Università di Torino - Dipartimento Scienza e Tecnologia del Farmaco
Via P. Giuria, 9 - Torino - ITALY

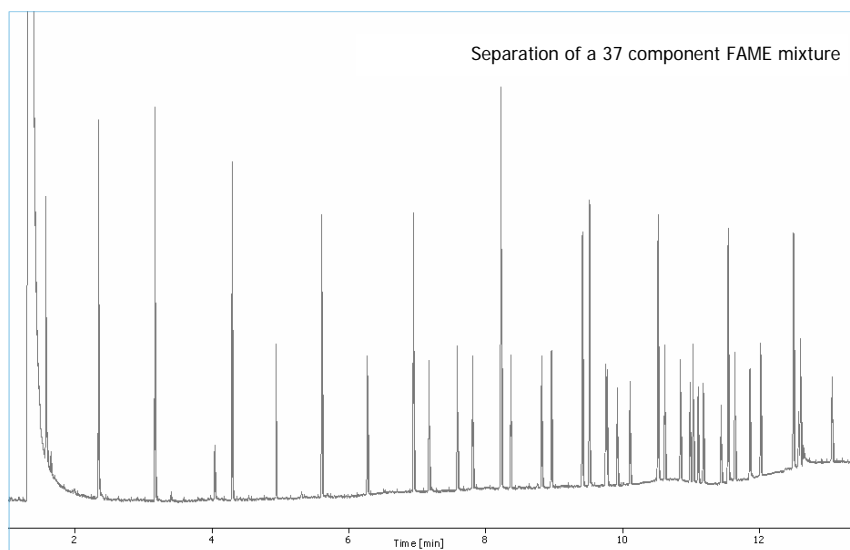
037



DN-WAX FAST

Chromatograms

Fast GC application: fatty acid methyl esters (FAME)



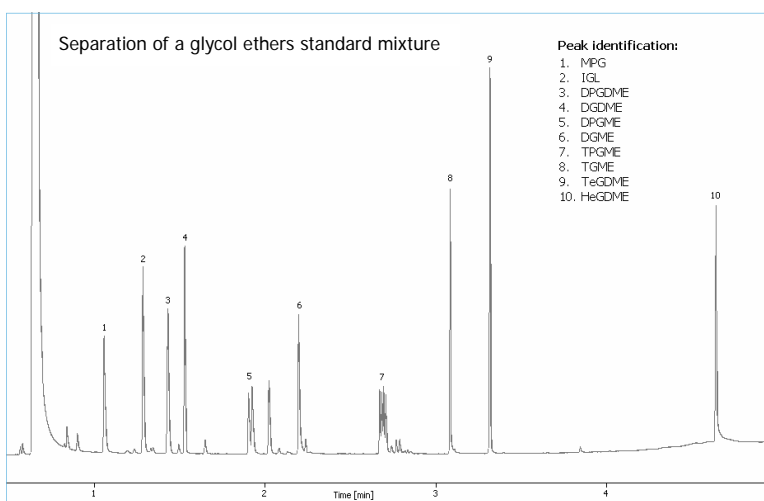
DN-WAX FAST 15m 0.10mm 0.10 μ m

Chromatographic Conditions

Oven	40°C - 1.0 min - 50°C/min - 105°C 15°C/min - 260°C
Injection	PTV - 60°C - 999°C/min - 400°C - 5 min
Carrier Gas	Hydrogen - 0.5 ml/min
Injection volume	0.5 μ L
Detector	FID - 400°C

063

Fast GC application: Glycol Ethers

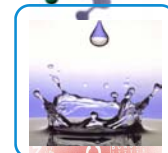
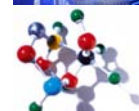


DN-WAX FAST 15m 0.10mm 0.10 μ m

Chromatographic Conditions

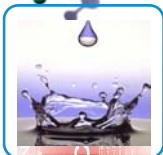
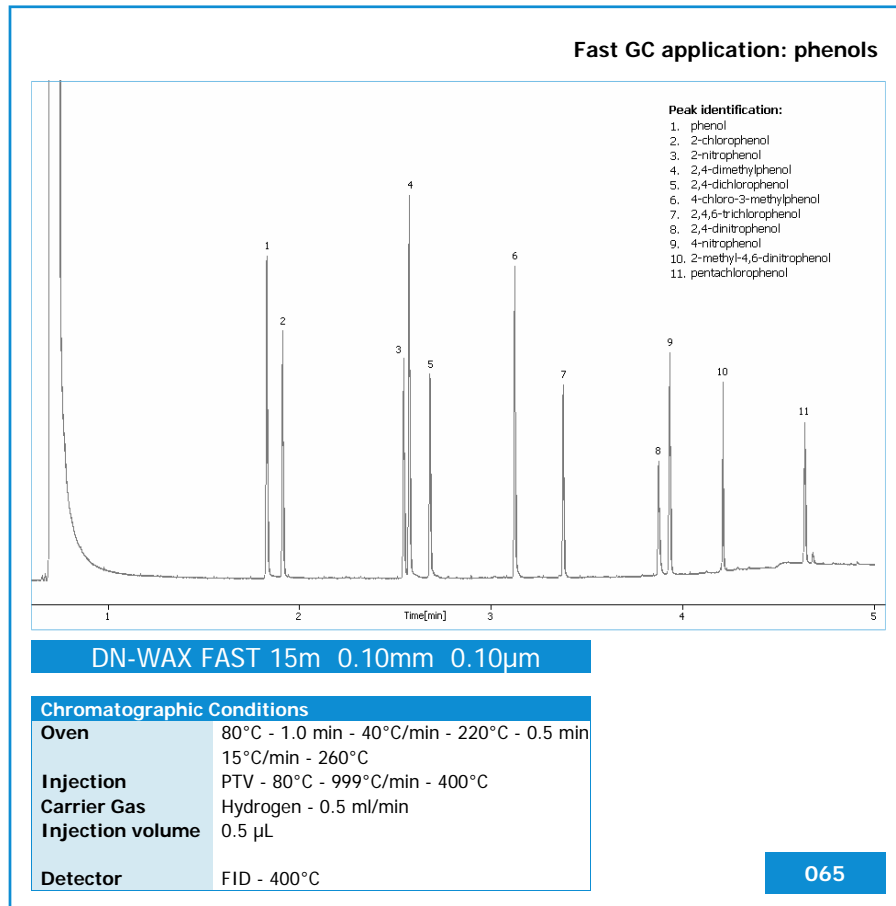
Oven	80°C - 0.5 min - 50°C/min - 280°C - 0.5 min
Injection	PTV - 60°C - 999°C/min - 400°C
Carrier Gas	Hydrogen - 0.5 ml/min
Injection volume	0.5 μ L
Detector	FID - 400°C

064



DN-WAX FAST

Chromatograms



По вопросам продажи и поддержки обращайтесь:

Архангельск (8182)63-90-72
Астана (7172)727-132
Астрахань (8512)99-46-04
Барнаул (3852)73-04-60
Белгород (4722)40-23-64
Брянск (4832)59-03-52
Владивосток (423)249-28-31
Волгоград (844)278-03-48
Вологда (8172)26-41-59
Воронеж (473)204-51-73
Екатеринбург (343)384-55-89
Иваново (4932)77-34-06
Ижевск (3412)26-03-58
Казань (843)206-01-48

Калининград (4012)72-03-81
Калуга (4842)92-23-67
Кемерово (3842)65-04-62
Киров (8332)68-02-04
Краснодар (861)203-40-90
Красноярск (391)204-63-61
Курск (4712)77-13-04
Липецк (4742)52-20-81
Магнитогорск (3519)55-03-13
Москва (495)268-04-70
Мурманск (8152)59-64-93
Набережные Челны (8552)20-53-41
Нижний Новгород (831)429-08-12
Новокузнецк (3843)20-46-81

Новосибирск (383)227-86-73
Омск (3812)21-46-40
Орел (4862)44-53-42
Оренбург (3532)37-68-04
Пенза (8412)22-31-16
Пермь (342)205-81-47
Ростов-на-Дону (863)308-18-15
Рязань (4912)46-61-64
Самара (846)206-03-16
Санкт-Петербург (812)309-46-40
Саратов (845)249-38-78
Севастополь (8692)22-31-93
Симферополь (3652)67-13-56
Смоленск (4812)29-41-54

Сочи (862)225-72-31
Ставрополь (8652)20-65-13
Сургут (3462)77-98-35
Тверь (4822)63-31-35
Томск (3822)98-41-53
Тула (4872)74-02-29
Тюмень (3452)66-21-18
Ульяновск (8422)24-23-59
Уфа (347)229-48-12
Хабаровск (4212)92-98-04
Челябинск (351)202-03-61
Череповец (8202)49-02-64
Ярославль (4852)69-52-93

Единый адрес для всех регионов: drs@nt-rt.ru || www.danimaster.nt-rt.ru

