



КАПИЛЛЯРНЫЕ КОЛОННЫ DN-1

Архангельск (8182)63-90-72
Астана (7172)727-132
Астрахань (8512)99-46-04
Барнаул (3852)73-04-60
Белгород (4722)40-23-64
Брянск (4832)59-03-52
Владивосток (423)249-28-31
Волгоград (844)278-03-48
Вологда (8172)26-41-59
Воронеж (473)204-51-73
Екатеринбург (343)384-55-89
Иваново (4932)77-34-06
Ижевск (3412)26-03-58
Казань (843)206-01-48

Калининград (4012)72-03-81
Калуга (4842)92-23-67
Кемерово (3842)65-04-62
Киров (8332)68-02-04
Краснодар (861)203-40-90
Красноярск (391)204-63-61
Курск (4712)77-13-04
Липецк (4742)52-20-81
Магнитогорск (3519)55-03-13
Москва (495)268-04-70
Мурманск (8152)59-64-93
Набережные Челны (8552)20-53-41
Нижний Новгород (831)429-08-12
Новокузнецк (3843)20-46-81

Новосибирск (383)227-86-73
Омск (3812)21-46-40
Орел (4862)44-53-42
Оренбург (3532)37-68-04
Пенза (8412)22-31-16
Пермь (342)205-81-47
Ростов-на-Дону (863)308-18-15
Рязань (4912)46-61-64
Самара (846)206-03-16
Санкт-Петербург (812)309-46-40
Саратов (845)249-38-78
Севастополь (8692)22-31-93
Симферополь (3652)67-13-56
Смоленск (4812)29-41-54

Сочи (862)225-72-31
Ставрополь (8652)20-65-13
Сургут (3462)77-98-35
Тверь (4822)63-31-35
Томск (3822)98-41-53
Тула (4872)74-02-29
Тюмень (3452)66-21-18
Ульяновск (8422)24-23-59
Уфа (347)229-48-12
Хабаровск (4212)92-98-04
Челябинск (351)202-03-61
Череповец (8202)49-02-64
Ярославль (4852)69-52-93

DN-1

DN-1		15m		
ID	Film	Max Temp	Code	Chroma
0.25mm	0.15µm	350°C	9414.116 001	007/008
0.25mm	0.25µm	350°C	9414.116 002	
0.25mm	0.45µm	330°C	9414.116 003	
0.25mm	1.00µm	330°C	9414.116 004	
0.25mm	1.50µm	330°C	9414.116 005	
0.32mm	0.15µm	350°C	9414.116 006	
0.32mm	0.25µm	350°C	9414.116 007	
0.32mm	0.45µm	330°C	9414.116 008	
0.32mm	1.00µm	330°C	9414.116 009	
0.32mm	1.50µm	330°C	9414.116 010	
0.32mm	3.00µm	320°C	9414.116 011	002
0.32mm	5.00µm	320°C	9414.116 012	
0.53mm	0.15µm	350°C	9414.116 013	
0.53mm	0.25µm	350°C	9414.116 014	
0.53mm	0.45µm	330°C	9414.116 015	
0.53mm	1.00µm	330°C	9414.116 016	
0.53mm	1.50µm	330°C	9414.116 017	
0.53mm	3.00µm	320°C	9414.116 018	
0.53mm	5.00µm	320°C	9414.116 019	

DN-1		50m		
ID	Film	Max Temp	Code	Chroma
0.25mm	0.15µm	350°C	9414.116 058	
0.25mm	0.25µm	350°C	9414.116 059	
0.25mm	0.45µm	330°C	9414.116 060	
0.25mm	1.00µm	330°C	9414.116 061	
0.25mm	1.50µm	330°C	9414.116 062	
0.32mm	0.15µm	350°C	9414.116 063	
0.32mm	0.25µm	350°C	9414.116 064	
0.32mm	0.45µm	330°C	9414.116 065	
0.32mm	1.00µm	330°C	9414.116 066	
0.32mm	1.50µm	330°C	9414.116 067	
0.32mm	3.00µm	320°C	9414.116 068	
0.32mm	5.00µm	320°C	9414.116 069	
0.53mm	0.15µm	350°C	9414.116 070	
0.53mm	0.25µm	350°C	9414.116 071	
0.53mm	0.45µm	330°C	9414.116 072	
0.53mm	1.00µm	330°C	9414.116 073	
0.53mm	1.50µm	330°C	9414.116 074	
0.53mm	3.00µm	320°C	9414.116 075	
0.53mm	5.00µm	320°C	9414.116 076	

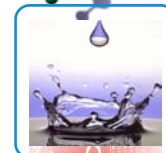
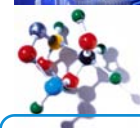
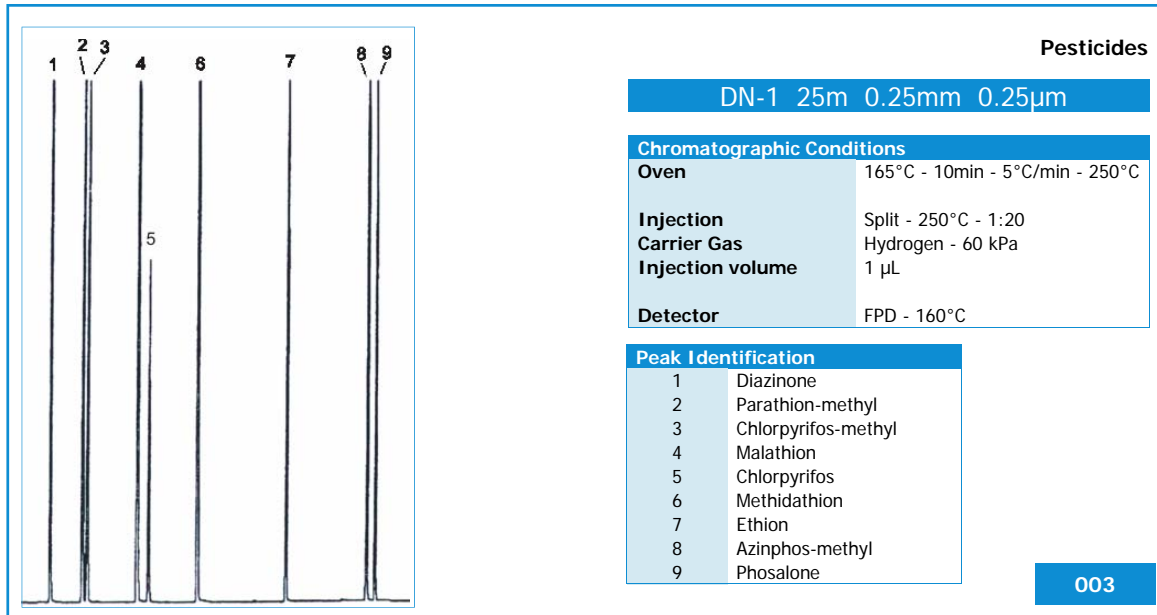
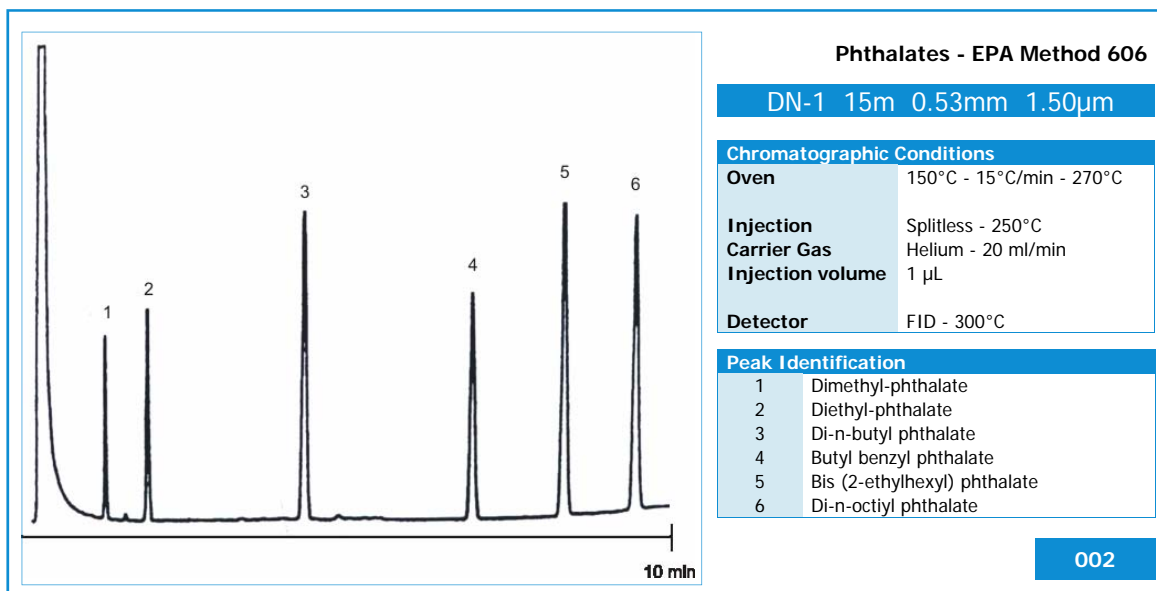
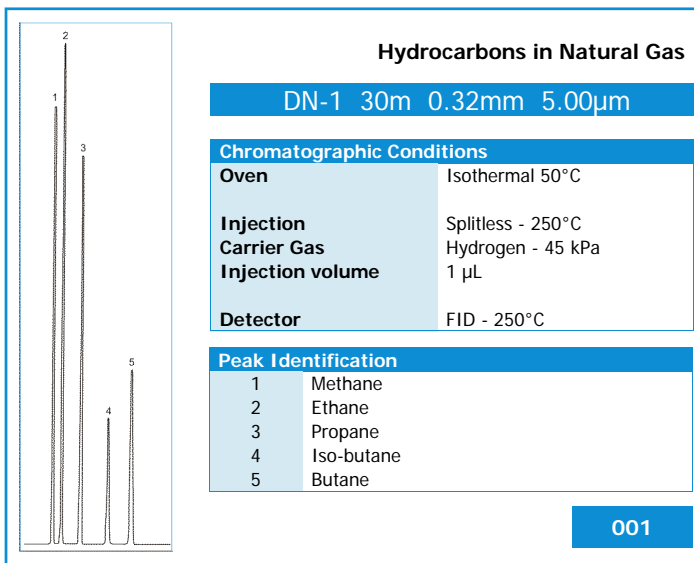
DN-1		25m		
ID	Film	Max Temp	Code	Chroma
0.25mm	0.15µm	350°C	9414.116 020	003
0.25mm	0.25µm	350°C	9414.116 021	
0.25mm	0.45µm	330°C	9414.116 022	
0.25mm	1.00µm	330°C	9414.116 023	
0.25mm	1.50µm	330°C	9414.116 024	
0.32mm	0.15µm	350°C	9414.116 025	
0.32mm	0.25µm	350°C	9414.116 026	
0.32mm	0.45µm	330°C	9414.116 027	
0.32mm	1.00µm	330°C	9414.116 028	
0.32mm	1.50µm	330°C	9414.116 029	
0.32mm	3.00µm	320°C	9414.116 030	
0.32mm	5.00µm	320°C	9414.116 031	
0.53mm	0.15µm	350°C	9414.116 032	
0.53mm	0.25µm	350°C	9414.116 033	
0.53mm	0.45µm	330°C	9414.116 034	
0.53mm	1.00µm	330°C	9414.116 035	
0.53mm	1.50µm	330°C	9414.116 036	
0.53mm	3.00µm	320°C	9414.116 037	
0.53mm	5.00µm	320°C	9414.116 038	

DN-1		60m		
ID	Film	Max Temp	Code	Chroma
0.25mm	0.15µm	350°C	9414.116 077	
0.25mm	0.25µm	350°C	9414.116 078	
0.25mm	0.45µm	330°C	9414.116 079	
0.25mm	1.00µm	330°C	9414.116 080	
0.25mm	1.50µm	330°C	9414.116 081	
0.32mm	0.15µm	350°C	9414.116 082	
0.32mm	0.25µm	350°C	9414.116 083	
0.32mm	0.45µm	330°C	9414.116 084	
0.32mm	1.00µm	330°C	9414.116 085	
0.32mm	1.50µm	330°C	9414.116 086	
0.32mm	3.00µm	320°C	9414.116 087	
0.32mm	5.00µm	320°C	9414.116 088	
0.53mm	0.15µm	350°C	9414.116 089	
0.53mm	0.25µm	350°C	9414.116 090	
0.53mm	0.45µm	330°C	9414.116 091	
0.53mm	1.00µm	330°C	9414.116 092	
0.53mm	1.50µm	330°C	9414.116 093	
0.53mm	3.00µm	320°C	9414.116 094	
0.53mm	5.00µm	320°C	9414.116 095	

DN-1		30m			
ID	Film	Max Temp	Code	Chroma	
0.25mm	0.15µm	350°C	9414.116 039		
0.25mm	0.25µm	350°C	9414.116 040		
0.25mm	0.45µm	330°C	9414.116 041		
0.25mm	1.00µm	330°C	9414.116 042		
0.25mm	1.50µm	330°C	9414.116 043		
0.32mm	0.15µm	350°C	9414.116 044		004
0.32mm	0.25µm	350°C	9414.116 045		
0.32mm	0.45µm	330°C	9414.116 046		
0.32mm	1.00µm	330°C	9414.116 047		
0.32mm	1.50µm	330°C	9414.116 048		
0.32mm	3.00µm	320°C	9414.116 049		
0.32mm	5.00µm	320°C	9414.116 050		
0.53mm	0.15µm	350°C	9414.116 051	001	
0.53mm	0.25µm	350°C	9414.116 052		
0.53mm	0.45µm	330°C	9414.116 053		
0.53mm	1.00µm	330°C	9414.116 054		
0.53mm	1.50µm	330°C	9414.116 055		
0.53mm	3.00µm	320°C	9414.116 056		
0.53mm	5.00µm	320°C	9414.116 057		

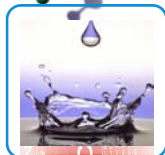
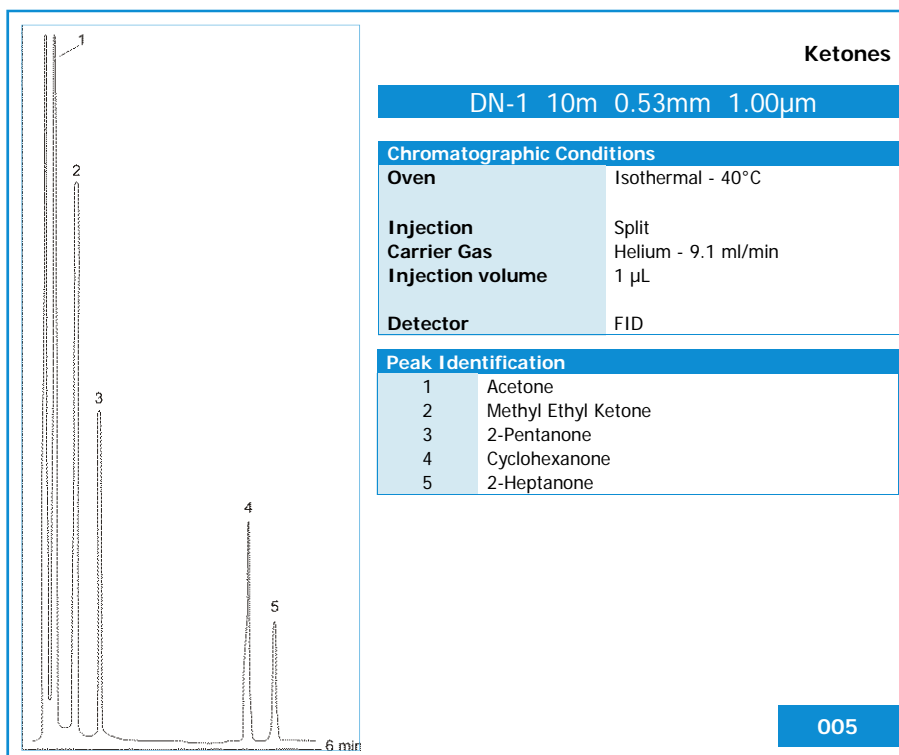
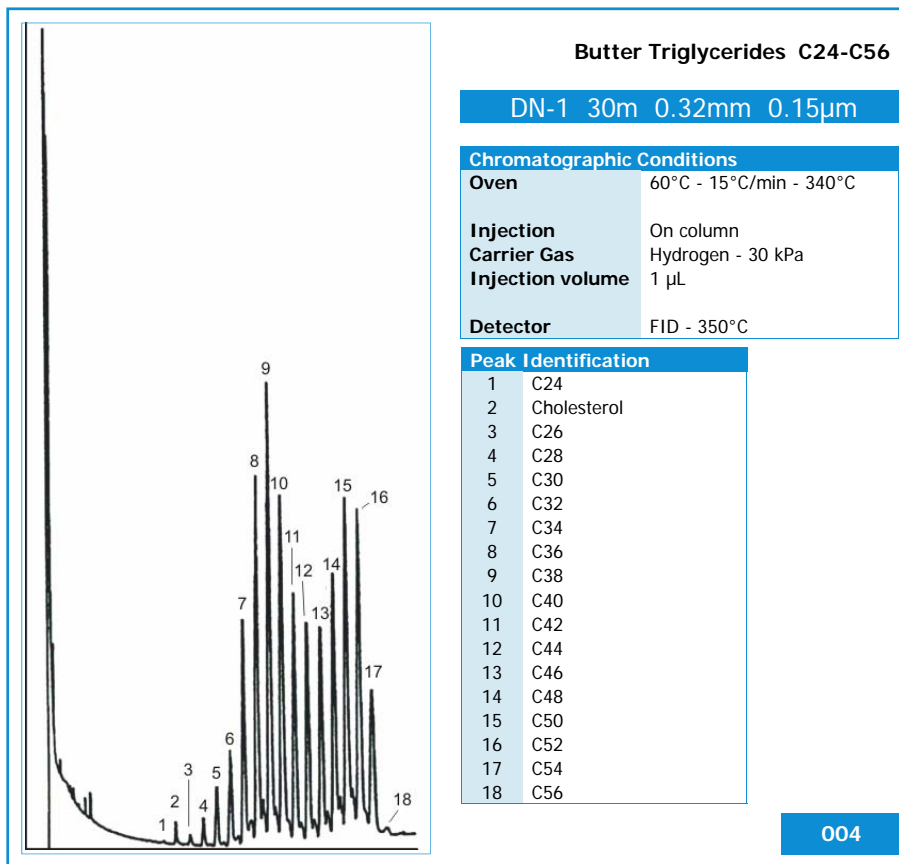
DN-1		Technical Specifications
Every Column Individually Tested		Test Certified and Grob Mixture included in each Column
Instruction Manual included in each Column		
DANI DN-1 Capillary Column		100% Dimethylpolysiloxane
Non-polar		Bonded and cross-linked
Inertness		Low bleeding
Good thermal stability		
Similar to	DB TM -1, Rtx TM -1, SPB TM -1, SPB TM -Sulfur, SP TM -2100, HP TM -1, HP TM -101, ULTRA TM -1, BP TM -1, CP-Si TM 5 CB, 007 TM -1, OV TM -1, SE TM -30, DC TM -200, RSL TM -150, RSL TM -160, PE-1, ZB-1, AT TM -1, EC TM -1	
Equivalent to	USP G1, G2, G38	

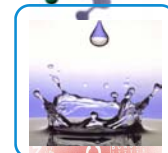
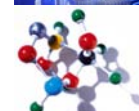
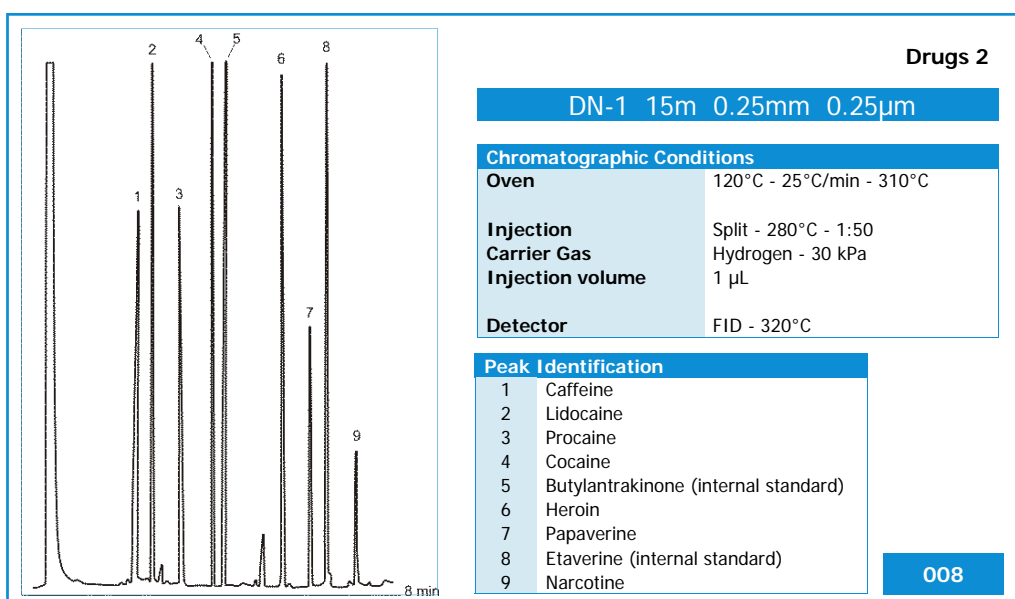
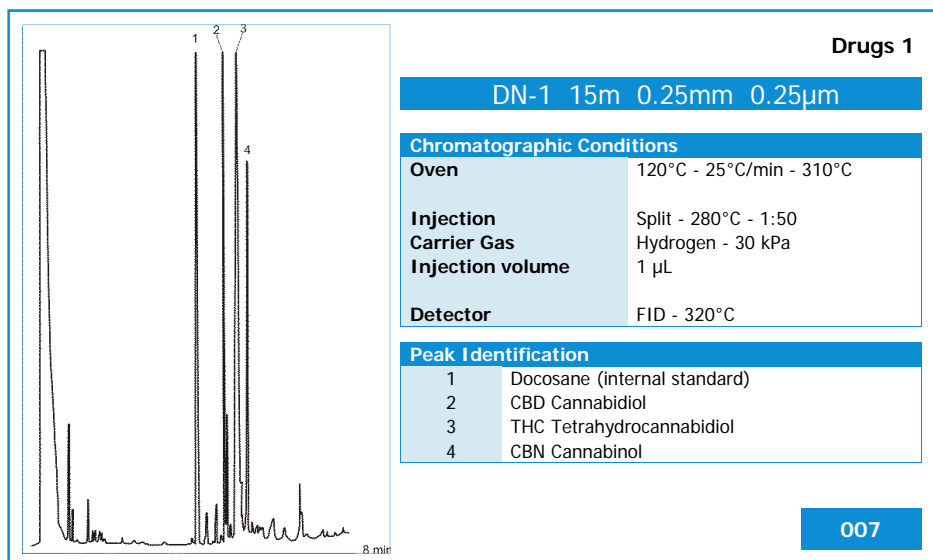
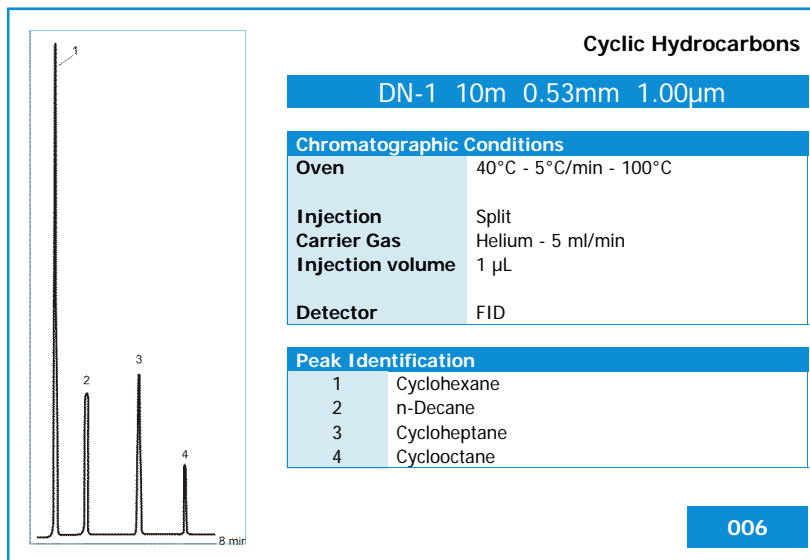




DN-1

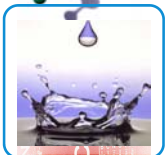
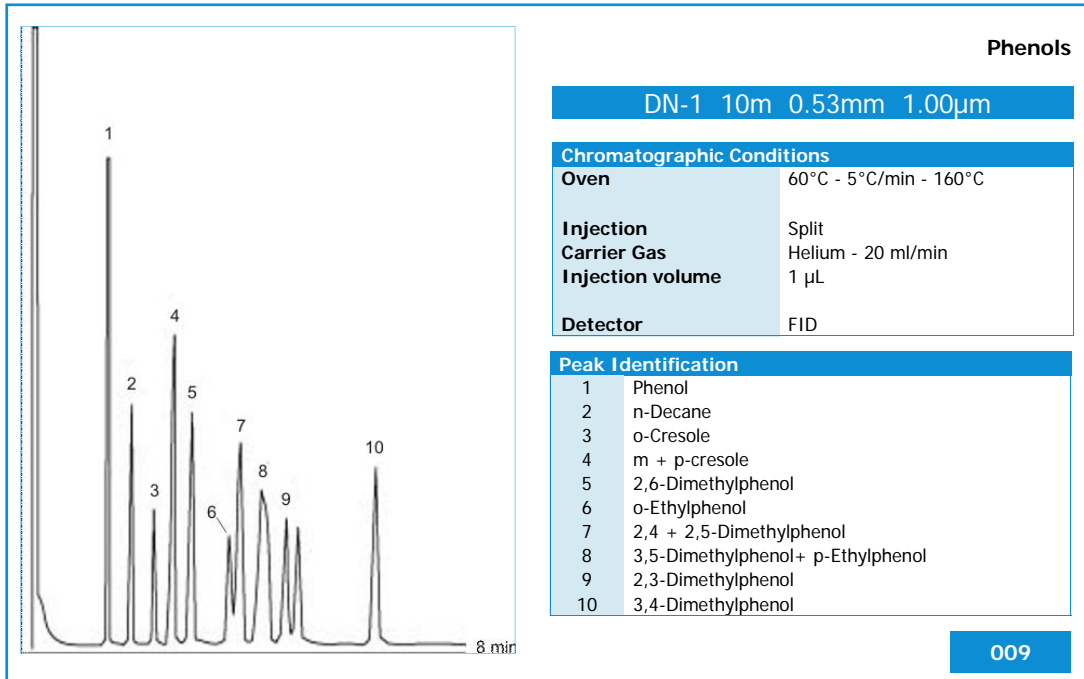
Chromatograms





DN-1

Chromatograms



DN-1 HT

DN-1 HT 15m

ID	Film	Max Temp	Code	Chroma
0.25mm	0.10µm	380°C	9414.117 192	
0.32mm	0.10µm	380°C	9414.117 193	
0.53mm	0.10µm	380°C	9414.117 194	

DN-1 HT 50m

ID	Film	Max Temp	Code	Chroma
0.25mm	0.10µm	380°C	9414.117 201	
0.32mm	0.10µm	380°C	9414.117 202	
0.53mm	0.10µm	380°C	9414.117 203	

DN-1 HT 25m

ID	Film	Max Temp	Code	Chroma
0.25mm	0.10µm	380°C	9414.117 195	
0.32mm	0.10µm	380°C	9414.117 196	
0.53mm	0.10µm	380°C	9414.117 197	

DN-1 HT 60m

ID	Film	Max Temp	Code	Chroma
0.25mm	0.10µm	380°C	9414.117 204	
0.32mm	0.10µm	380°C	9414.117 205	
0.53mm	0.10µm	380°C	9414.117 206	

DN-1 HT 30m

ID	Film	Max Temp	Code	Chroma
0.25mm	0.10µm	380°C	9414.117 198	
0.32mm	0.10µm	380°C	9414.117 199	
0.53mm	0.10µm	380°C	9414.117 200	

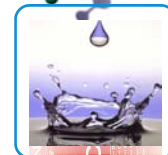
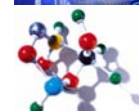
DN-1 HT Technical Specifications

Every Column Individually Tested
 Test Certified and Grob Mixture included in each Column
 Instruction Manual included in each Column

DANI DN-1 HT Capillary Column
 100% Dimethylpolysiloxane
 Non-polar
 Bonded and cross-linked
 Inertness
 Low bleeding
 Good thermal stability

Similar to DBTM-1, RtTM-1, SPBTM-1, SPBTM-Sulfur, SPTM-2100, HPTM-1, HPTM-101, ULTRATM-1, BPTM-1, CP-SilTM 5 CB, 007TM-1, OVTM-1, SETM-30, DCTM-200, RSLTM-150, RSLTM-160, PE-1, ZB-1, ATTM-1, ECTM-1

Equivalent to USP G1, G2, G38



DN-1 MS

DN-1 MS 15m				
ID	Film	Max Temp	Code	Chroma
0.25mm	0.15µm	350°C	9414.116 096	
0.25mm	0.25µm	350°C	9414.116 097	
0.32mm	0.15µm	350°C	9414.116 098	
0.32mm	0.25µm	350°C	9414.116 099	

DN-1 MS 50m				
ID	Film	Max Temp	Code	Chroma
0.25mm	0.15µm	350°C	9414.116 108	
0.25mm	0.25µm	350°C	9414.116 109	
0.32mm	0.15µm	350°C	9414.116 110	
0.32mm	0.25µm	350°C	9414.116 111	

DN-1 MS 25m				
ID	Film	Max Temp	Code	Chroma
0.25mm	0.15µm	350°C	9414.116 100	
0.25mm	0.25µm	350°C	9414.116 101	
0.32mm	0.15µm	350°C	9414.116 102	
0.32mm	0.25µm	350°C	9414.116 103	

DN-1 MS 60m				
ID	Film	Max Temp	Code	Chroma
0.25mm	0.15µm	350°C	9414.116 112	
0.25mm	0.25µm	350°C	9414.116 113	
0.32mm	0.15µm	350°C	9414.116 114	
0.32mm	0.25µm	350°C	9414.116 115	

DN-1 MS 30m				
ID	Film	Max Temp	Code	Chroma
0.25mm	0.15µm	350°C	9414.116 104	
0.25mm	0.25µm	350°C	9414.116 105	
0.32mm	0.15µm	350°C	9414.116 106	
0.32mm	0.25µm	350°C	9414.116 107	

DN-1 MS		Technical Specifications
Every Column Individually Tested Test Certified and Grob Mixture included in each Column Instruction Manual included in each Column		
DANI DN-1 MS Capillary Column 100% Dimethylpolysiloxane Non-polar Bonded and cross-linked Inertness Low bleeding Good thermal stability		
Similar to	DB TM -1ms, HP TM -1ms, Rtx TM -1ms, CP-Sil TM 5 CB low bleed/ms, AT TM -1ms	
Equivalent to	USP G1, G2, G38	



DN-1 FAST 5m

ID	Film	Max Temp	Code	Chroma
0.05mm	0.05µm	350°C	9414.116 116	
0.05mm	0.10µm	350°C	9414.116 117	
0.10mm	0.10µm	350°C	9414.116 118	
0.10mm	0.20µm	350°C	9414.116 119	

DN-1 FAST 10m

ID	Film	Max Temp	Code	Chroma
0.05mm	0.05µm	350°C	9414.116 120	
0.05mm	0.10µm	350°C	9414.116 121	
0.10mm	0.10µm	350°C	9414.116 122	
0.10mm	0.20µm	350°C	9414.116 123	

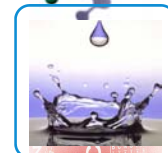
DN-1 FAST Technical Specifications

Every Column Individually Tested
 Test Certified and Grob Mixture included in each Column
 Instruction Manual included in each Column

DANI DN-1 FAST Capillary Column
 100% Dimethylpolysiloxane
 Non-polar
 Bonded and cross-linked
 Inertness
 Low bleeding
 Good thermal stability

Similar to DBTM-1, RtxTM-1, SPBTM-1, SPBTM-Sulfur, SPTM-2100, HPTM-1, HPTM-101, ULTRATM-1, BPTM-1, CP-SilTM 5 CB, 007TM-1, OVTM-1, SETM-30, DCTM-200, RSLTM-150, RSLTM-160, PE-1, ZB-1, ATTM-1

Equivalent to USP G1, G2, G38



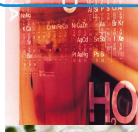
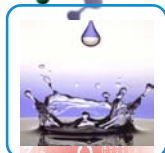
DN-1 FAST HT

DN-1 FAST HT 5m

ID	Film	Max Temp	Code	Chroma
0.05mm	0.05µm	380°C	9414.117 267	
0.05mm	0.10µm	380°C	9414.117 268	
0.10mm	0.10µm	380°C	9414.117 269	

DN-1 FAST HT 10m

ID	Film	Max Temp	Code	Chroma
0.05mm	0.05µm	380°C	9414.117 270	
0.05mm	0.10µm	380°C	9414.117 271	
0.10mm	0.10µm	380°C	9414.117 272	



DN-1 FAST HT Technical Specifications

Every Column Individually Tested
 Test Certified and Grob Mixture included in each Column
 Instruction Manual included in each Column

DANI DN-1 FAST HT Capillary Column
 100% Dimethylpolysiloxane
 Non-polar
 Bonded and cross-linked
 Inertness
 Low bleeding
 Good thermal stability

Similar to DBTM-1, RtTM-1, SPBTM-1, SPBTM-Sulfur,
 SPTM-2100, HPTM-1, HPTM-101, ULTRATM-1,
 BPTM-1, CP-SilTM 5 CB, 007TM-1, OVTM-1,
 SETM-30, DCTM-200, RSLTM-150, RSLTM-160,
 PE-1, ZB-1, ATTM-1

Equivalent to USP G1, G2, G38

По вопросам продажи и поддержки обращайтесь:

Архангельск (8182)63-90-72
Астана (7172)727-132
Астрахань (8512)99-46-04
Барнаул (3852)73-04-60
Белгород (4722)40-23-64
Брянск (4832)59-03-52
Владивосток (423)249-28-31
Волгоград (844)278-03-48
Вологда (8172)26-41-59
Воронеж (473)204-51-73
Екатеринбург (343)384-55-89
Иваново (4932)77-34-06
Ижевск (3412)26-03-58
Казань (843)206-01-48

Калининград (4012)72-03-81
Калуга (4842)92-23-67
Кемерово (3842)65-04-62
Киров (8332)68-02-04
Краснодар (861)203-40-90
Красноярск (391)204-63-61
Курск (4712)77-13-04
Липецк (4742)52-20-81
Магнитогорск (3519)55-03-13
Москва (495)268-04-70
Мурманск (8152)59-64-93
Набережные Челны (8552)20-53-41
Нижний Новгород (831)429-08-12
Новокузнецк (3843)20-46-81

Новосибирск (383)227-86-73
Омск (3812)21-46-40
Орел (4862)44-53-42
Оренбург (3532)37-68-04
Пенза (8412)22-31-16
Пермь (342)205-81-47
Ростов-на-Дону (863)308-18-15
Рязань (4912)46-61-64
Самара (846)206-03-16
Санкт-Петербург (812)309-46-40
Саратов (845)249-38-78
Севастополь (8692)22-31-93
Симферополь (3652)67-13-56
Смоленск (4812)29-41-54

Сочи (862)225-72-31
Ставрополь (8652)20-65-13
Сургут (3462)77-98-35
Тверь (4822)63-31-35
Томск (3822)98-41-53
Тула (4872)74-02-29
Тюмень (3452)66-21-18
Ульяновск (8422)24-23-59
Уфа (347)229-48-12
Хабаровск (4212)92-98-04
Челябинск (351)202-03-61
Череповец (8202)49-02-64
Ярославль (4852)69-52-93

Единый адрес для всех регионов: drs@nt-rt.ru || www.danimaster.nt-rt.ru

